

# SYRIUS®

*Hybrid*

**Univerzális kézi plazmapisztolyok  
bármilyen plazmavágó géphez 20A-160A**

**UPH-105 75°**

**UPH-125 75°**

**UPH-160 85°**

**Jobb teljesítmény**

**Tisztább vágás**

**Gyorsabb munka**

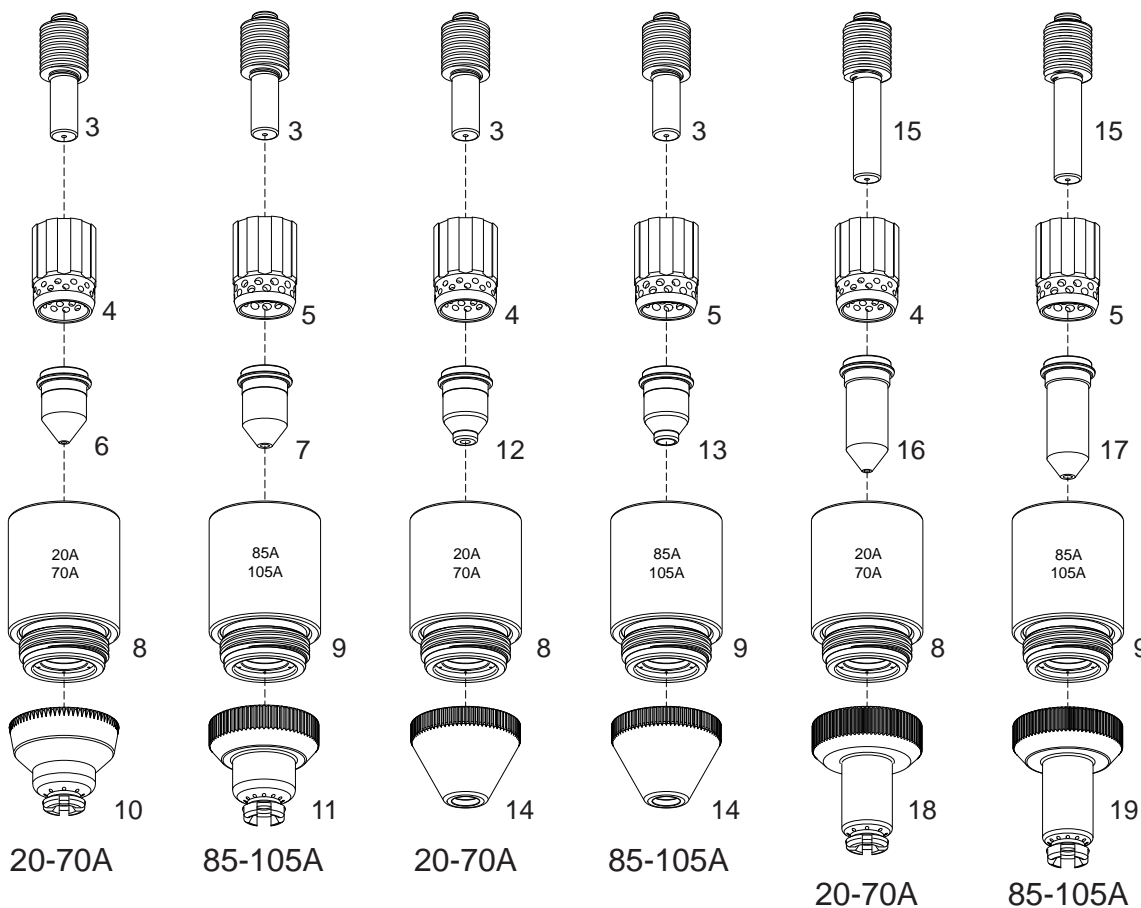
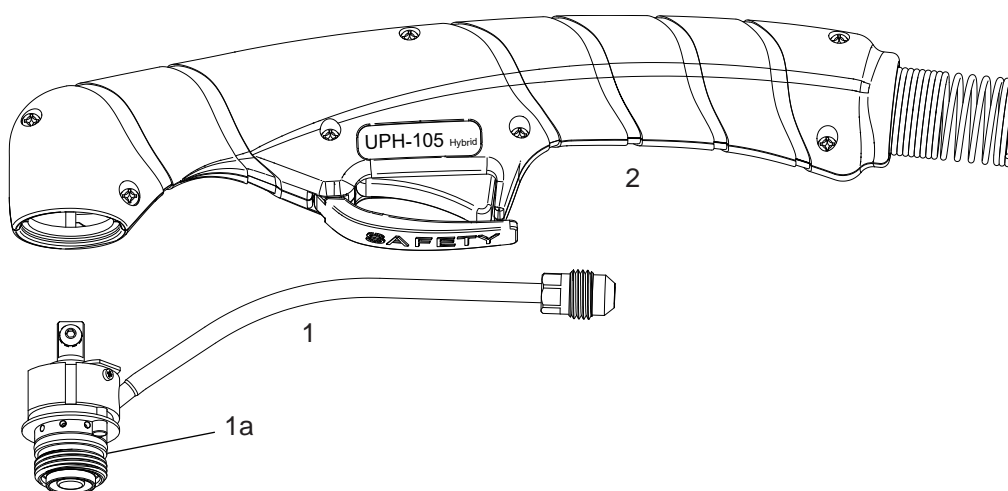
# UPH-105

Hybrid

## Technical Data

Current : 20-105 Amps  
 Duty Cycle: 105 Amps at 60%  
 Gas: Air/N2  
 Gas Pressure  
 - Cutting: 72-80 PSI (5.0-5.5 bar)  
 - Gouging: 50-65 PSI (3.5-4.5 bar)  
 Gas Flow at 105A: 510 SCFH (240 lpm)  
 Post Flow Time : 45 sec  
 Pilot : Electrode to Tip (12-20A)  
 Ignition: Without HF

For the correct operation please use:  
 3-Ways Solenoid Valve, inside orifice  
 3.5-4.0mm - (0.138-0.157 inches)



Contact

Gouging

Extended

# UPH-105

## Hybrid

Air or N<sub>2</sub>

**UPH-105**  
■ Standard Layout

**UNICUT**®



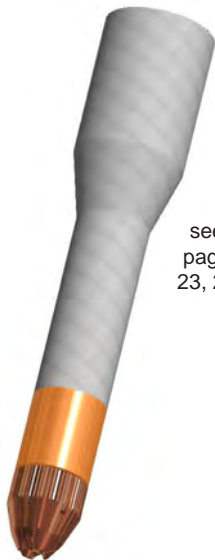
see  
page  
15

**FLATCUT**®



see  
pages  
15, 18-19

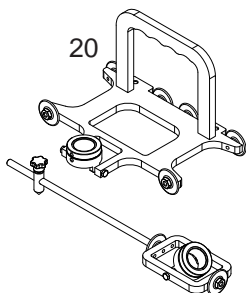
**AIRONCUT**®



see  
page  
23, 26

**Bevel Tool**

Patent pending



### Replacement Parts

#### Torch parts

Item	Description	Code
1	■ UPH-105 75° Hand Torch Head	05800
1a	■ O-Ring	07300.60
2	■ Handle complete with parts	05305
3	■ Electrode, 20-105A	52574
4	Swirl ring, 20-70A <b>Maximum Life</b>	60041
	Swirl ring, 20-70A <b>ECO</b>	60041E
5	■ Swirl ring, 85-105A <b>Maximum Life</b>	60024
	Swirl ring, 85-105A <b>ECO</b>	60024E
6	Tip, Contact Cutting, 45A	51206
	Tip, Contact Cutting, 70A	51206.11
7	Tip, Contact Cutting, 85A	51223.13
	■ Tip, Contact Cutting, 105A	51223.15
8	Shield Cup Body, 20-70A <b>Maximum Life</b>	60305
	Shield Cup Body, 20-70A <b>ECO</b>	60305E
9	■ Shield Cup Body, 85-105A <b>Maximum Life</b>	60329
	Shield Cup Body, 85-105A <b>ECO</b>	60329E
10	Shield Cap, 20-70A Hand	51923
11	■ Shield Cap, 85-105A Hand	51941
12	Tip, Gouging, 45A	51206G
	Tip, Gouging, 70A	51206G.10
13	Tip, Gouging, 105A	51223G.14
14	Shield Cap, Gouging	51924G
15	Extended Electrode, 20-105A	52574L
16	Extended Tip, 45A	51206L
	Extended Tip, 70A	51206L.11
17	Extended Tip, 85A	51223L.13
	Extended Tip, 105A	51223L.15
18	Extended Shield 20-70A	51923L
19	Extended Shield 85-105A	51941L

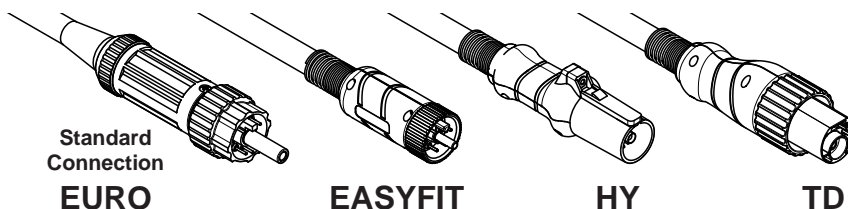
#### Accessories

N/S	Circle Cutting Attachment	51865
20	BEVEL TOOL	51880

#### Complete Torches Maximum Life

UPH-105 75°, Hand Torch, 6m (20 ft) Leads, <b>Coaxial Cable</b> , Euro Connector	05821CX
UPH-105 75°, Hand Torch, 12m (40 ft) Leads, <b>Coaxial Cable</b> , Euro Connector	05826CX

Torches with different connectors available on request.



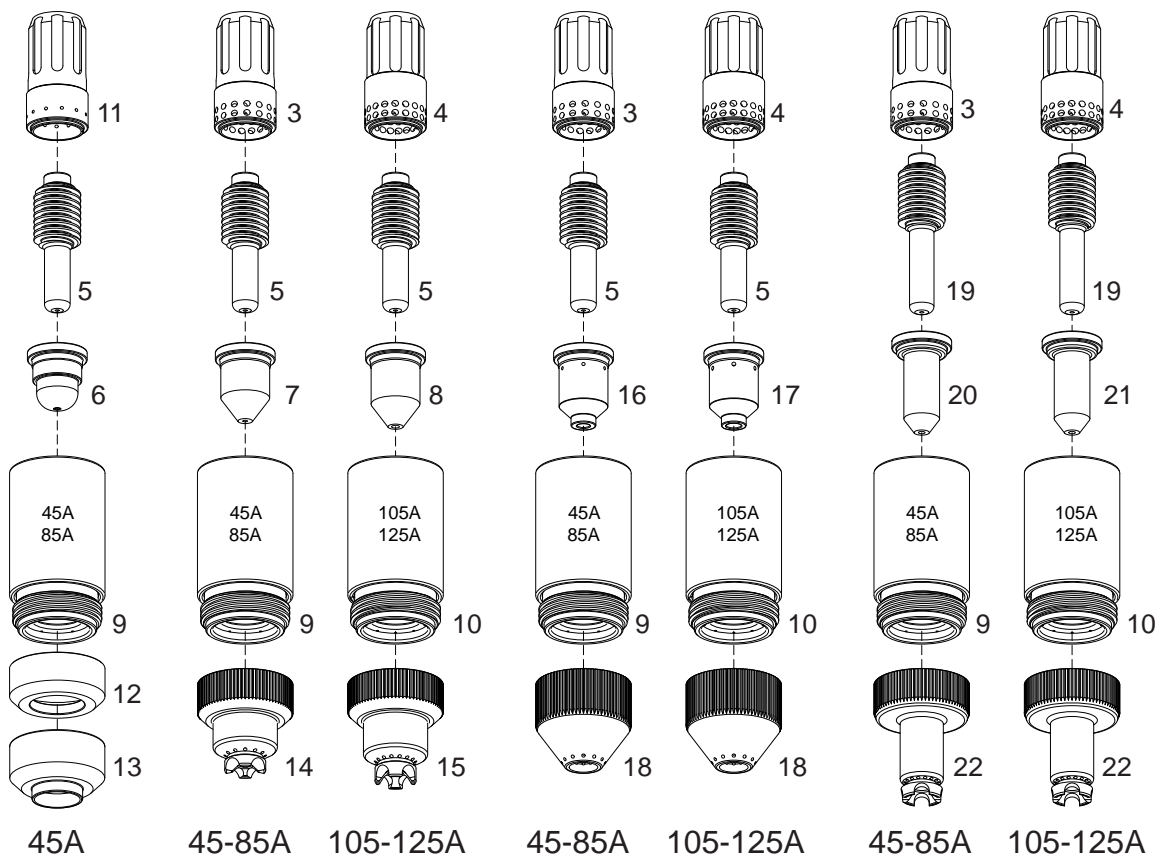
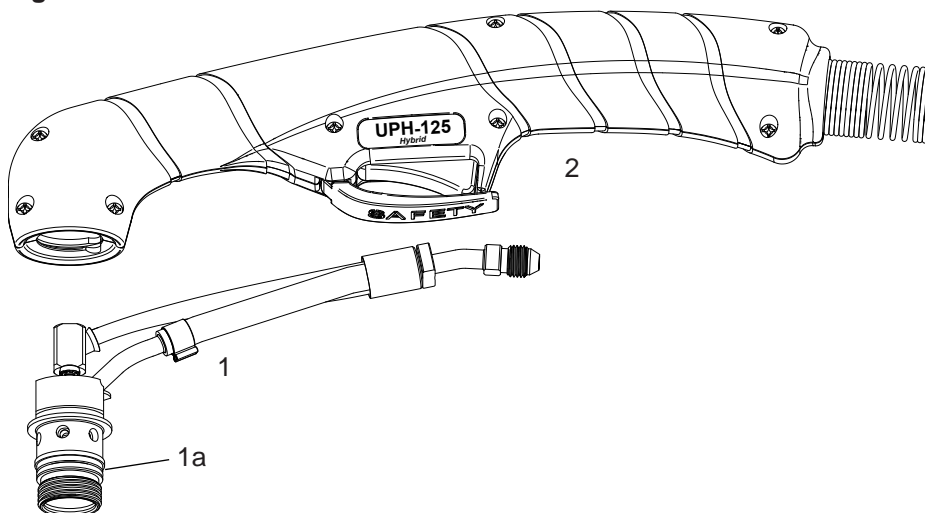
# UPH-125

## Hybrid

### Technical Data

**Current :** 40-150 Amps  
**Duty Cycle:** 125 Amps at 60%  
 150 Amps at 40%  
**Gas:** Air/N2  
**Gas Pressure**  
 - Cutting 125A: 72-87 PSI (5.0-6.0 bar)  
 - Cutting 150A: 80-87 PSI (5.5-6.0 bar)  
 - Gouging: 50-65 PSI (3.5-4.5 bar)  
**Gas Flow at 125A:** 630 SCFH (295 lpm)  
**Post Flow Time :** 45 sec  
**Pilot :** Electrode to Tip (15-22A)  
**Ignition:** Without HF

**For the correct operation please use:**  
 3-Ways Solenoid Valve, inside orifice  
 4.5-5.5mm - (0.178-0.217 inches)



**Precision**

**Cut**

**Contact**

**Gouging**

**Extended**

# UPH-125

## Hybrid

### Air or N<sub>2</sub>

#### UPH-125 ■ Standard Layout

**UNICUT**®



see  
page  
17

**FLATCUT**®



see  
pages  
17, 20-21

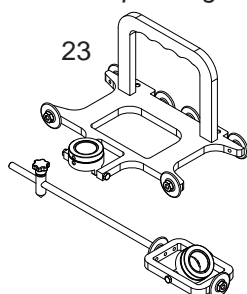
**AIRONCUT**®



see  
page  
24

#### Bevel Tool

Patent pending



### Replacement Parts

#### Torch parts

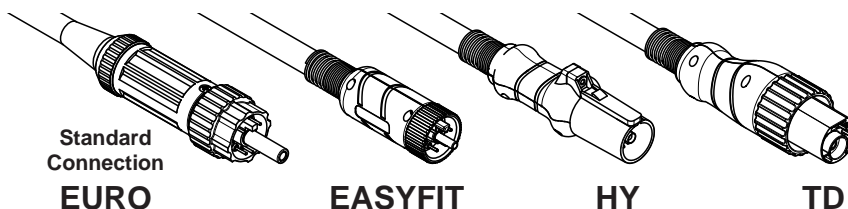
Item	Description	Code
1	■ UPH-125 75° Hand Torch Head	05900
1a	■ O-Ring	03700.60
2	■ Handle complete with parts	05905
3	Swirl ring, 45-85A <b>Maximum Life</b>	60042
	Swirl ring, 45-85A <b>ECO</b>	60042E
4	■ Swirl ring, 100-125A <b>Maximum Life</b>	60040
	Swirl ring, 100-125A <b>ECO</b>	60040E
5	■ Electrode, 45-125A	52677
	Electrode, 45-125A, <b>BiMetal</b> (on request)	52677BM
6	Tip, Cutting, 45A, Precision Cut	51415
7	Tip, Contact Cutting, 45A	51416
	Tip, Contact Cutting, 65A	51417
	Tip, Contact Cutting, 85A	51418
8	Tip, Contact Cutting, 105A	51419
	■ Tip, Contact Cutting, 125A	51419.16
	Tip, Contact Cutting, 150A	51419.18
9	Shield Cup Body, 45-85A <b>Maximum Life</b>	60309AV
	Shield Cup Body, 45-85A <b>ECO</b>	60309A
10	■ Shield Cup Body, 100-125A <b>Maximum Life</b>	60309BV
	Shield Cup Body, 100-125A <b>ECO</b>	60309B
11	Swirl ring, 45A, Precision Cut, <b>Maximum Life</b>	60032
12	Deflector,	51928
13	Deflector, 45A, Precision Cut	51931
14	Shield Cap, 45-85A Hand	51921
15	■ Shield Cap, 100-125A Hand	51926
16	Tip, Gouging, 65-85A	51417G
17	Tip, Gouging, 105A	51418G
	Tip, Gouging, 125A	51419G
18	Shield Cap, Gouging	51927G
19	Extended Electrode, 45-125A	52677L
20	Extended Tip, 65A	51417L.12
	Extended Tip, 85A	51417L.13
21	Extended Tip, 105A	51417L.15
	Extended Tip, 125A	51417L.17
22	Extended Shield 65-125A	51923L
<b>Accessories</b>		
N/S	Circle Cutting Attachment	51865
23	BEVEL TOOL	51880

#### Complete Torches Maximum Life

**UPH-125 75°**, Hand Torch, 6m (20 ft) Leads,  
**Coaxial Cable**, Euro Connector 05921CX

**UPH-125 75°**, Hand Torch, 12m (40 ft) Leads,  
**Coaxial Cable**, Euro Connector 05926CX

**Torches with different connectors available on request.**



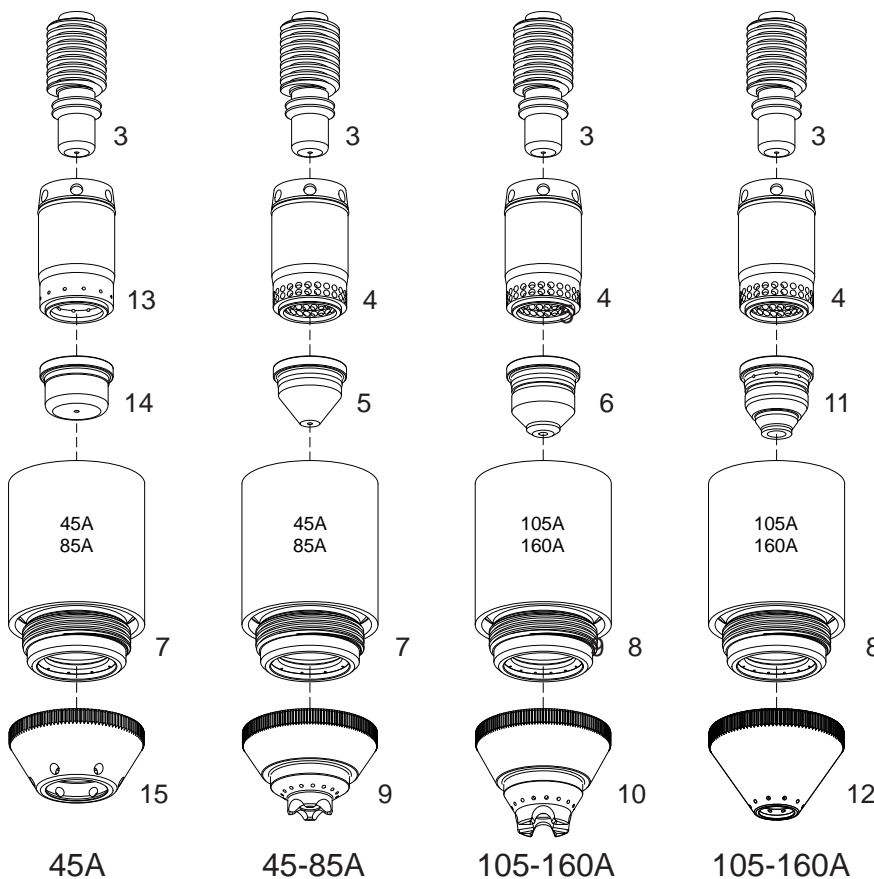
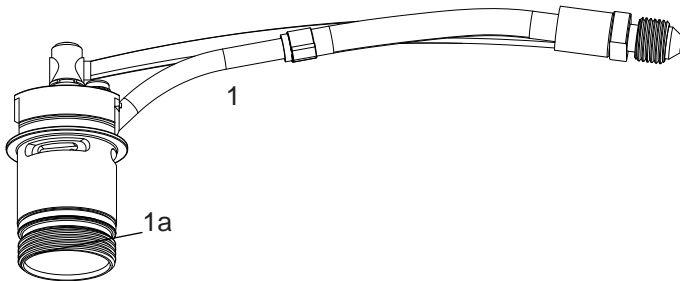
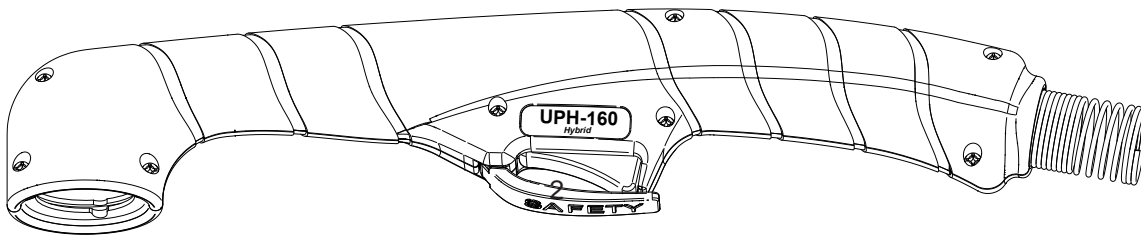
# UPH-160

## Hybrid

### Technical Data

**Current :** 30-160 Amps  
**Duty Cycle:** 160 Amps at 60%  
**Gas:** Air/N2  
**Gas Pressure**  
 - Cutting: 72-87 PSI (5.0-6.0 bar)  
 - Gouging: 40-46 PSI (3.0-3.5 bar)  
**Gas Flow at 160A:** 850 SCFH (420 lpm)  
**Post Flow Time :** 45 sec  
**Pilot :** Electrode to Tip (22-25A)  
**Ignition:** Without HF

**For the correct operation please use:**  
 3-Ways Solenoid Valve, inside orifice  
 4.5-5.5mm - (0.178-0.217 inches)



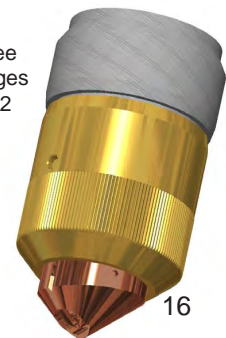
**Precision  
Cut**

**Contact**

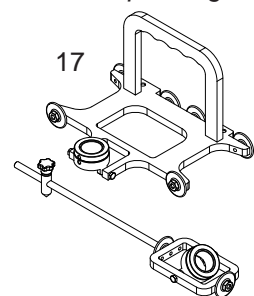
**Gouging**

**FLATCUT®**

see  
pages  
22



**Bevel Tool**  
Patent pending





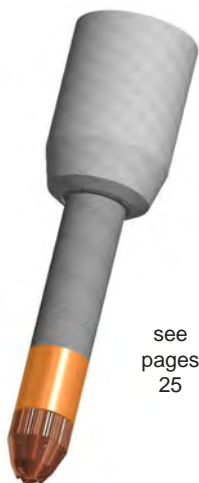
# UPH-160

## Hybrid

Air or N<sub>2</sub>

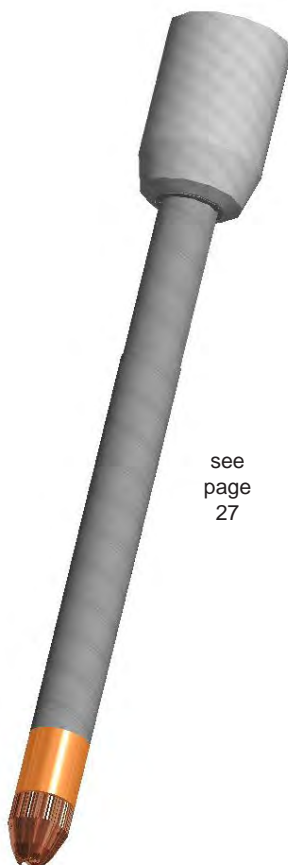
**UPH-160**  
■ Standard Layout

**AIRONCUT**®



see  
pages  
25

**AIRONCUT**  
**XXXL**®



see  
page  
27

### Replacement Parts

#### Torch parts

Item	Description	Code
1	■ <b>UPH-160 85°</b> Hand Torch Head	03900
1a	■ O-Ring	03900.60
2	■ Handle complete with parts.	05505
3	■ Electrode, <b>Patent Pending</b> Electrode, <b>BiMetal, Patent Pending</b> , (on request)	52678 52678BM
4	■ Swirl ring <b>Maximum Life</b> Swirl ring <b>ECO</b>	60039 60039E
5	Tip, Cutting, 45A	51420
	Tip, Cutting, 65A	51421
	Tip, Cutting, 85A	51422
6	Tip, Cutting, 105-125A	51425
	■ Tip, Cutting, 160A	51426
7	Shield Cup Body, 45-85A	60311TA
8	■ Shield Cup Body, 105-160A	60311TB
9	Shield Cap, Hand, 45-85A	51916T
10	■ Shield Cap, Hand, 105-160A	51917T
11	Tip, Gouging, 105-125A	51424G
	Tip, Gouging, 160A	51425G
12	Shield Cap, Gouging	51919G
13	Swirl ring, Precision Cut (Hand Cutting)	60033
14	Tip, 30-45A, Precision Cut	51428
15	Deflector, Precision Cut	51915
16	Standard KIT <b>FLATCUT 85-125A NEW</b>	53637
	Standard KIT <b>FLATCUT 130-160A NEW</b>	53638

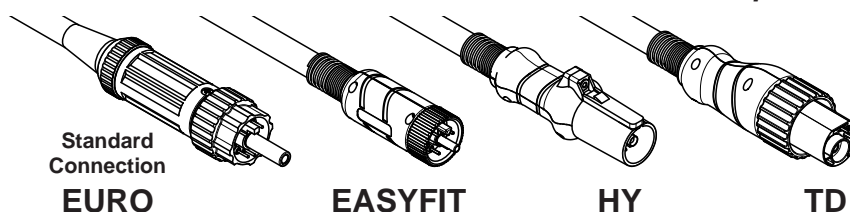
#### Accessories

n/s	Circle Cutting Attachment	51868
17	BEVEL TOOL	51886

#### Complete Torches Maximum Life

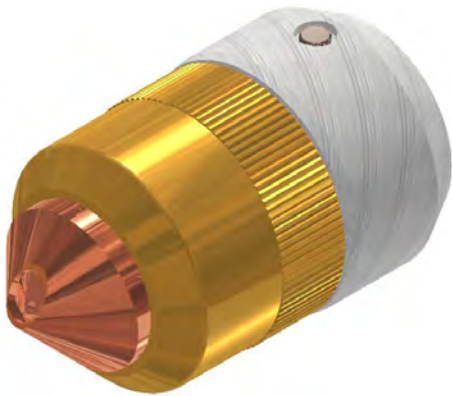
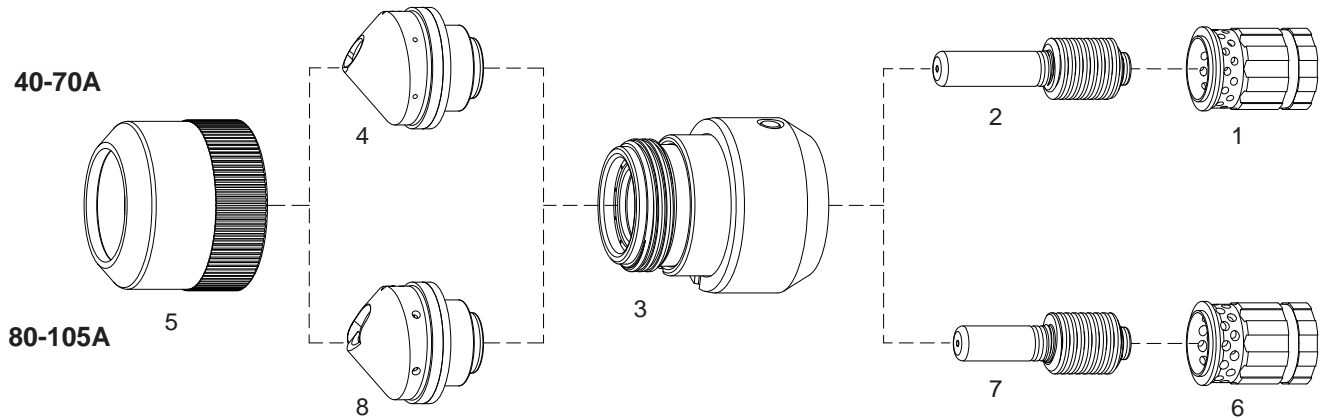
<b>UPH-160 85°</b> Hand Torch, 6m (20 ft) Leads, <b>Coaxial Cable</b> , Euro Connector.	03921CX
<b>UPH-160 85°</b> Hand Torch, 12m (40 ft) Leads, <b>Coaxial Cable</b> , Euro Connector.	03926CX

**Torches with different connectors available on request.**

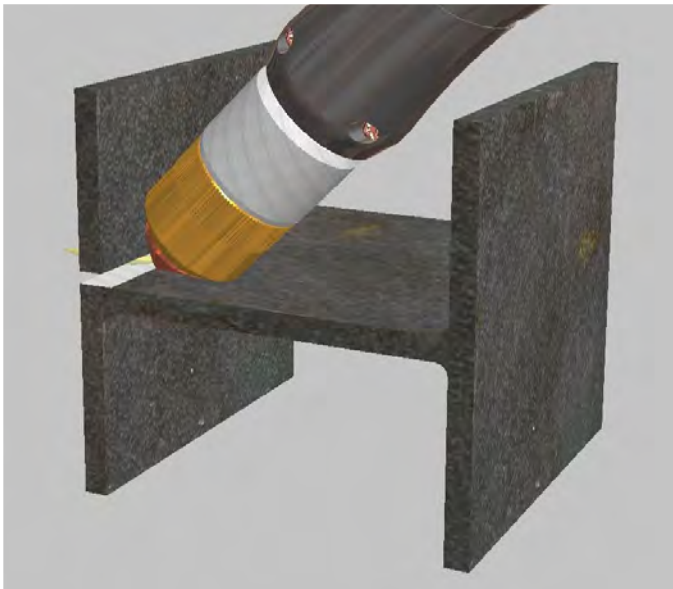


## FLATCUT<sup>®</sup>

with 45 degree inclined arc for cutting Flat



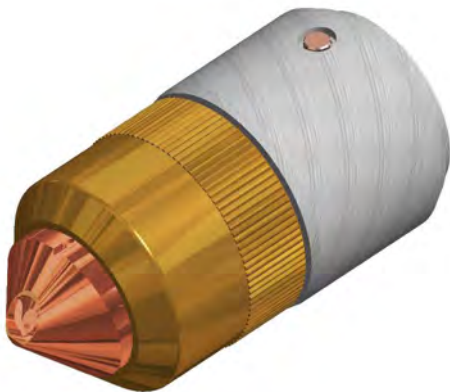
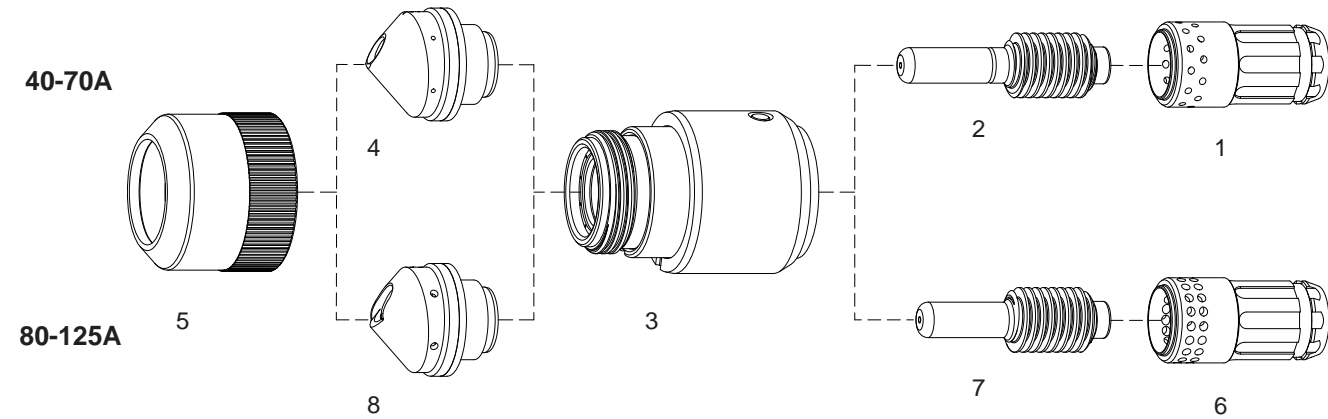
#	Code	Description	Pkg
	<b>53501</b>	<b>Standard KIT 40-70A</b>	<b>1</b>
1	60075	Swirl Ring 40-70A	2
2	53519	Electrode 40-70A	5
3	53510	Retaining Cap	1
4	53530	Tip 40/70A	5
5	53541	Retaining Ring	2
	<b>53502</b>	<b>Standard KIT 80-105A</b>	<b>1</b>
6	60076	Swirl Ring 80-105A	2
7	53520	Electrode 80-105A	5
3	53510	Retaining Cap	1
8	53531	Tip 80-105A	5
5	53541	Retaining Ring	2



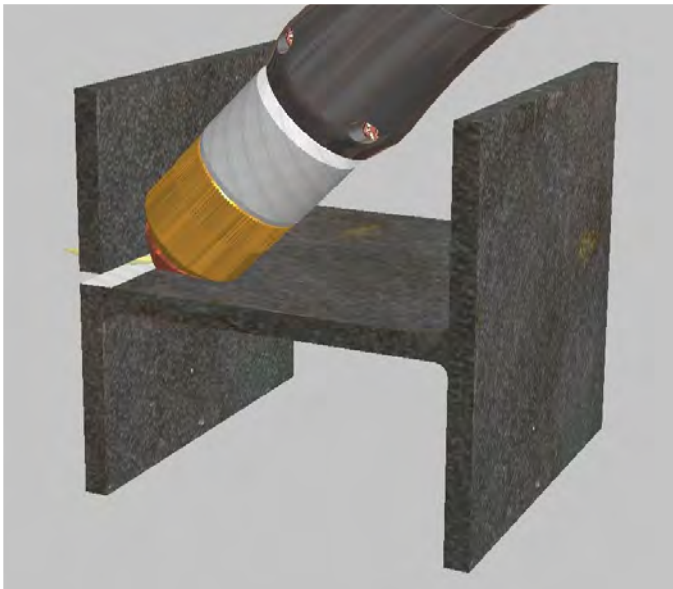


## FLATCUT<sup>®</sup>

with 45 degree inclined arc for cutting Flat



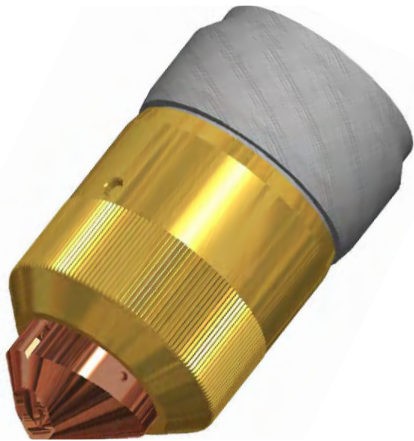
#	Code	Description	Pkg
	<b>53504</b>	<b>Standard KIT 40-70A</b>	<b>1</b>
1	60062	Swirl Ring 40-70A	2
2	53521	Electrode 40-70A	5
3	53511	Retaining Cap	1
4	53532	Tip 40-70A	5
5	53541	Retaining Ring	2
	<b>53505</b>	<b>Standard KIT 80-125A</b>	<b>1</b>
6	60063	Swirl Ring 80-125A	2
7	52677	Electrode 80-125A	5
3	53511	Retaining Cap	1
8	53533	Tip 80-125A	5
5	53541	Retaining Ring	2



**UPH-160**

# **FLATCUT**®

with 45 degree inclined arc for cutting Flat



Code	Description	Pkg
53637	Standard KIT 85-125A	1
53638	Standard KIT 130-160A	1

## **BXEUPH-160FC**



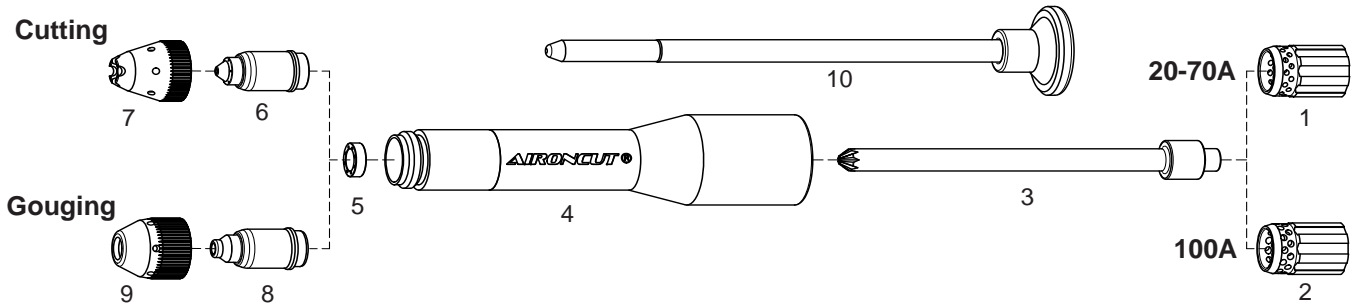
## **BXEUPH-160FC Kit 85-160A**

Code	Description	Qty
53544	Electrode with Swirl Ring	1
53545	Retaining Cap	1
53535	Tip 85-125A	1
53536	Tip 130-160A	1
53543	Retaining Ring	1

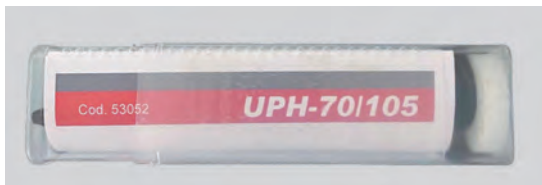
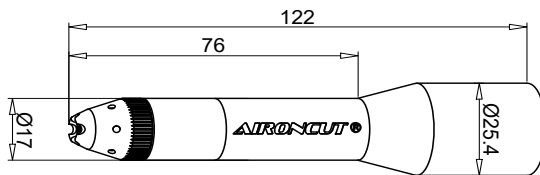


## AIRONCUT®

New high visibility consumable system to cut inaccessible parts.



For gouging use maximum 4 bar



53052 Standard Kit 70A Cutting

#	Code	Description	Pkg
1	60041E	Swirl Ring 20-70A	2
2	60024E	Swirl Ring 100A	2
3	53001	Electrode	3
4	53012	Shield Cup Body	1
5	53022	Vortex Ring	3
6	53031	Tip 20-45A	5
	53032	Tip 70A	5
	53034	Tip 100A	5
7	53047	Shield Cap Cutting	5
8	53036	Tip 50A Gouging	5
	53037	Tip 70A Gouging	5
	53038	Tip 100A Gouging	5
9	53046	Shield Cap Gouging	5
10	53080	Extractor for tip	1

### BXAUPH105-AC



### BXAUPH105-AC

### Special Box

Code	Description	Qty
60041E	Swirl Ring 20-70A	1
60024E	Swirl Ring 100A	1
53001	Electrode	2
53022	Vortex Ring	2
53031	Tip 20-45A	3
53032	Tip 70A	3
53034	Tip 100A	5
53047	Shield Cap Cutting	2
53037	Tip 70A Gouging	3
53038	Tip 100A Gouging	5
53046	Shield Cap Gouging	2
<b>53052</b>	<b>Standard Kit 70A Cutting</b>	<b>1</b>

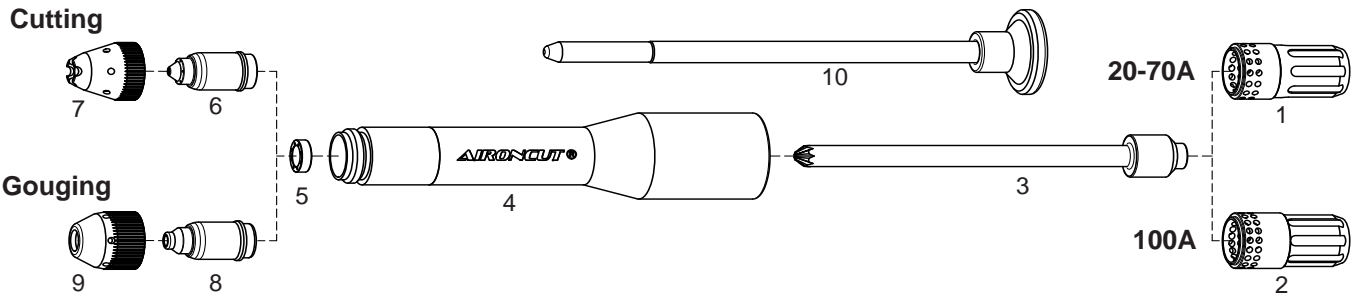
IT Util. Pat. Pend.:  
N° IT202021000001583

45A	Max Thickness	8 mm
70A	Max Thickness	12.5 mm
100A	Max Thickness	20.0 mm

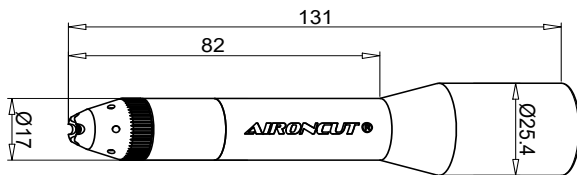


## AIRONCUT®

New high visibility consumable system to cut inaccessible parts.



For gouging use maximum 4 bar



53152 Standard Kit 70A Cutting

#	Code	Description	Pkg
1	60042E	Swirl Ring 20-70A	2
2	60040E	Swirl Ring 100A	2
3	53101	Electrode	3
4	53112	Shield Cup Body	1
5	53022	Vortex Ring	3
6	53031	Tip 20-45A	5
	53032	Tip 70A	5
	53034	Tip 100A	5
7	53047	Shield Cap Cutting	5
8	53036	Tip 50A Gouging	5
	53037	Tip 70A Gouging	5
	53038	Tip 100A Gouging	5
9	53046	Shield Cap Gouging	5
10	53080	Extractor for tip	1

### BXAUPH125-AC



### BXAUPH125-AC

### Special Box

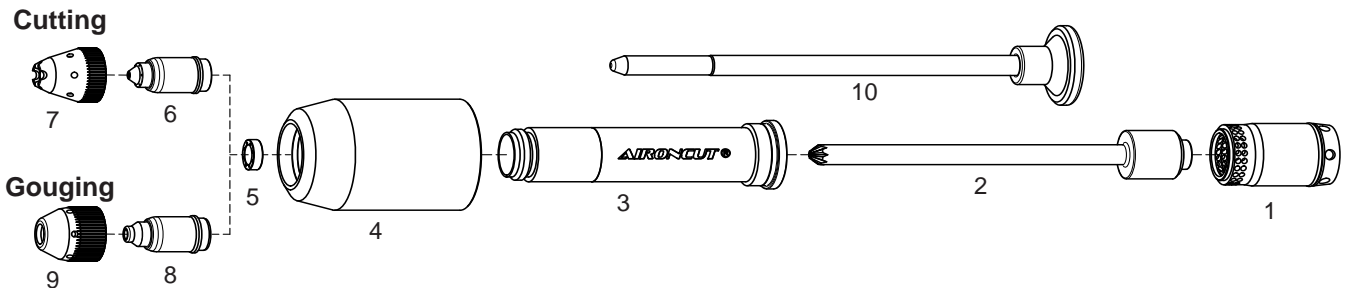
Code	Description	Qty
60042E	Swirl Ring 20-70A	1
60040E	Swirl Ring 100A	1
53101	Electrode	2
53022	Vortex Ring	2
53031	Tip 20-45A	3
53032	Tip 70A	3
53034	Tip 100A	5
53047	Shield Cap Cutting	2
53037	Tip 70A Gouging	3
53038	Tip 100A Gouging	5
53046	Shield Cap Gouging	2
<b>53152</b>	<b>Standard Kit 70A Cutting</b>	<b>1</b>

45A	Max Thickness	8 mm
70A	Max Thickness	12.5 mm
100A	Max Thickness	20.0 mm

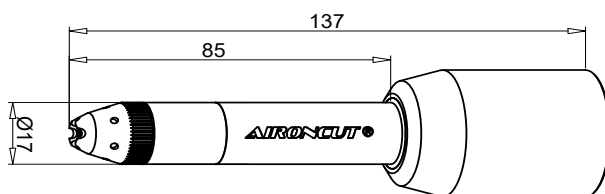
IT Util. Pat. Pend.:  
N° IT202021000001583

## AIRONCUT®

New high visibility consumable system to cut inaccessible parts.



For gouging use maximum 4 bar



53252 Standard Kit 70A Cutting

#	Code	Description	Pkg
1	60039E	Swirl Ring	2
2	53201	Electrode	3
3	53211	Shield Cup Body	1
4	53212	Retaining Cap	1
5	53022	Vortex Ring	3
6	53031	Tip 20-45A	5
	53032	Tip 70A	5
	53034	Tip 100A	5
7	53047	Shield Cap Cutting	5
8	53036	Tip 50A Gouging	5
	53037	Tip 70A Gouging	5
	53038	Tip 100A Gouging	5
9	53046	Shield Cap Gouging	5
10	53080	Extractor for tip	1

### BXAUPH160-AC



### BXAUPH160-AC

### Special Box

Code	Description	Qty
60039E	Swirl Ring	1
53201	Electrode	2
53022	Vortex Ring	2
53031	Tip 20-45A	3
53032	Tip 70A	3
53034	Tip 100A	5
53047	Shield Cap Cutting	2
53037	Tip 70A Gouging	3
53038	Tip 100A Gouging	5
53046	Shield Cap Gouging	2
<b>53252</b>	<b>Standard Kit 70A Cutting</b>	<b>1</b>

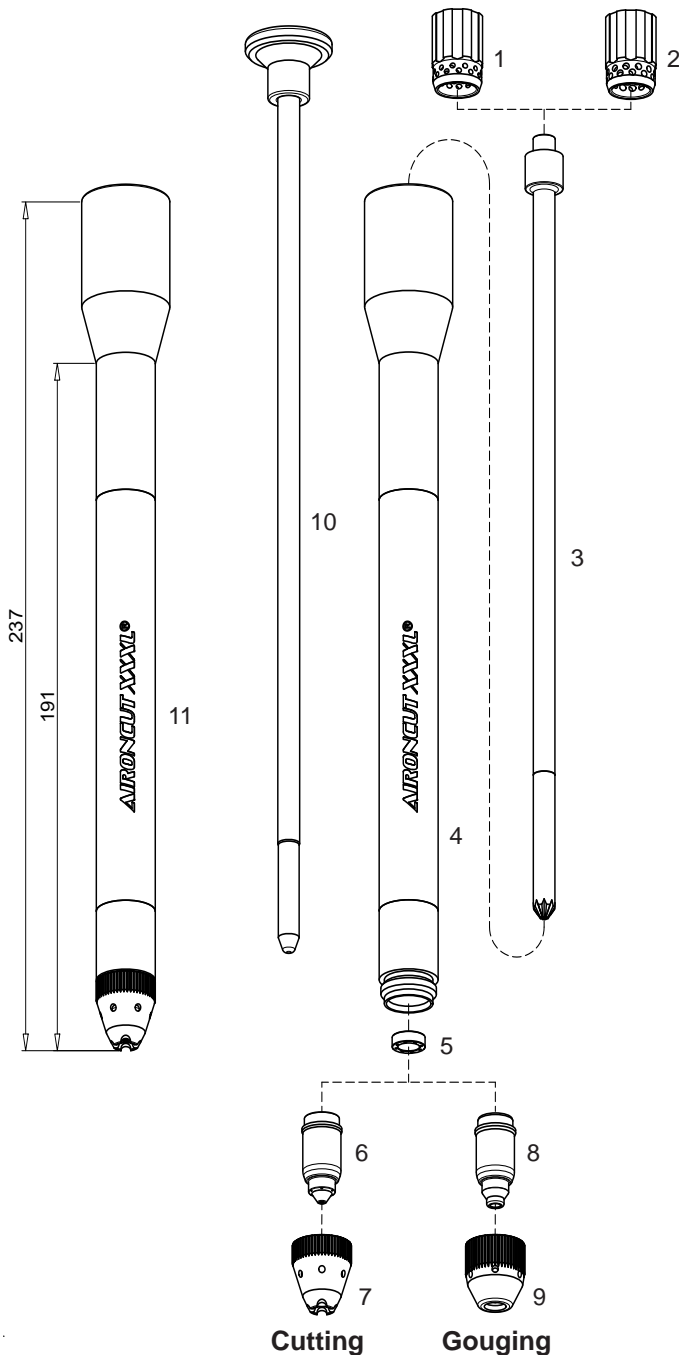
IT Util. Pat. Pend.:  
N° IT202021000001583

45A	Max Thickness	8 mm
70A	Max Thickness	12.5 mm
100A	Max Thickness	20.0 mm



## AIRONCUT XXXL<sup>®</sup>

New high visibility consumable system  
to cut inaccessible parts.



#	Code	Description	Pkg
1	60041E	Swirl Ring 20-70A	2
2	60024E	Swirl Ring 100A	2
3	53001L	Electrode **	3
4	53012L	Shield Cup Body	1
5	53022	Vortex Ring	3
6	53031	Tip 20-45A	5
	53032	Tip 70A	5
	53034	Tip 100A	5
7	53047	Shield Cap 20-100A	5
8	53036	Tip 50A Gouging	5
	53037	Tip 70A Gouging	5
	53038	Tip 100A Gouging	5
9	53046	Shield Cap Gouging	5
10	53080L	Extractor for tip	1
11	53052L	Complete Kit 70A Cutting	1



\*\* Item not saleable in USA and Russia, being patented in said country.

Tec.Mo. accepts no responsibility in case of its customer's attempted sale in USA and Russia.



53052L Standard Kit 70A Cutting

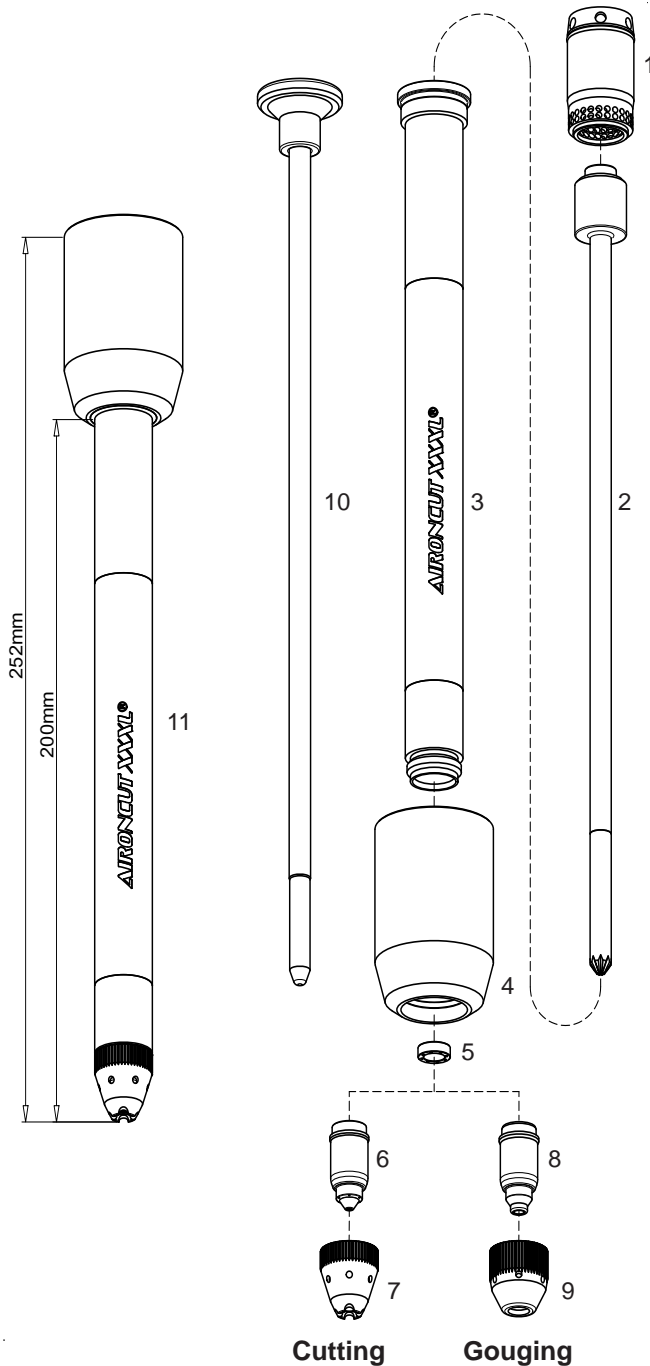
IT Util. Pat. Pend.:  
N° IT202021000001583

For gouging use maximum 4 bar

45A	Max Thickness	8 mm
70A	Max Thickness	12.5 mm
100A	Max Thickness	20.0 mm

## IRONCUT XXXL<sup>®</sup>

New high visibility consumable system to cut inaccessible parts.



#	Code	Description	Pkg
1	60039E	Swirl Ring	2
3	53201L	Electrode **	3
4	53211L	Shield Cup Body	1
5	53212	Retaining Cap	1
5	53022	Vortex Ring	3
6	53031	Tip 20-45A	5
	53032	Tip 70A	5
	53034	Tip 100A	5
7	53047	Shield Cap 20-100A	5
8	53036	Tip 50A Gouging	5
	53037	Tip 70A Gouging	5
	53038	Tip 100A Gouging	5
9	53046	Shield Cap Gouging	5
10	53080L	Extractor for tip	1
11	53252L	Complete Kit 70A Cutting	1



\*\* Item not saleable in USA and Russia, being patented in said country.

Tec.Mo. accepts no responsibility in case of its customer's attempted sale in USA and Russia.



53252L Standard Kit 70A Cutting

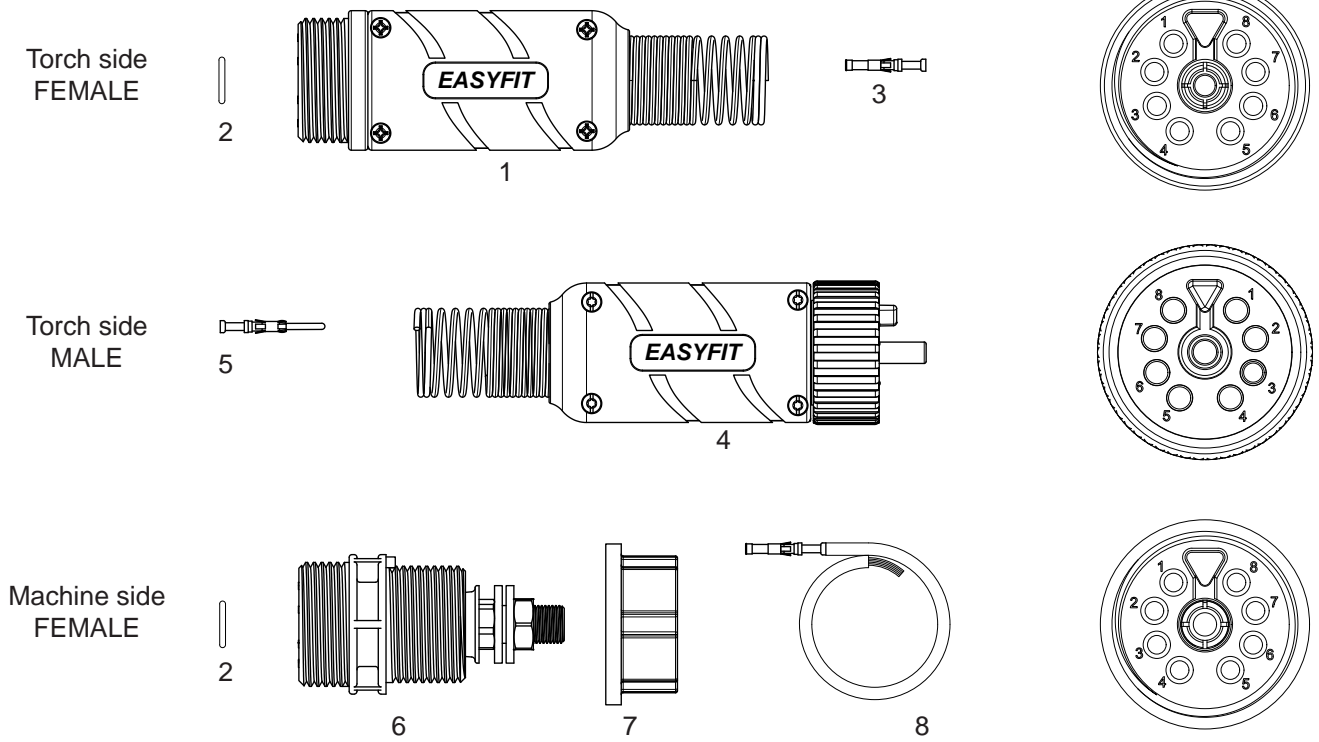
IT Util. Pat. Pend.:  
N° IT202021000001583

For gouging use maximum 4 bar

45A	Max Thickness	8 mm
70A	Max Thickness	12.5 mm
100A	Max Thickness	20.0 mm

# EASY FIT Connector

Registered Community Design



Item	Description	Code
1	Complete KIT <b>EASYFIT Female</b> - for cables with crimped connection	05266RPT
2	O-Ring - (conf.20 pcs)	20850.41
3	Contact pin female - (conf.10 pcs)	05265.45
4	Complete KIT <b>EASYFIT Male</b> - for cables with crimped connection	05261RPT
5	Contact pin male - (conf.10 pcs)	05260.45
6	<b>Machine connector EASYFIT</b> ( standard connection 6 pins )	05265
	<b>Machine connector EASYFIT</b> ( connection 7 pins )	05265-7
	<b>Machine connector EASYFIT</b> ( connection 8 pins )	05265-8
7	Hexagonal Nut	04265.41
8	Contact pin, <b>BLACK</b> lead, 0.75mm <sup>2</sup> x 600mm	04265.21
	Contact pin, <b>RED</b> lead, 0.75mm <sup>2</sup> x 600mm	04265.22
	Contact pin, <b>BLUE</b> lead, 0.75mm <sup>2</sup> x 600mm	04265.23
	Contact pin, <b>BROWN</b> lead, 0.75mm <sup>2</sup> x 600mm	04265.24
	Contact pin, <b>WHITE</b> lead, 0.75mm <sup>2</sup> x 600mm	04265.25