

SYRIUS®

PT-20C

PT-25C

PT-40

PT-60

PT-80

PT-100

PT-105 PLUS

ST-120

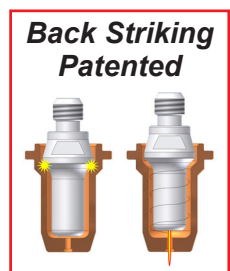
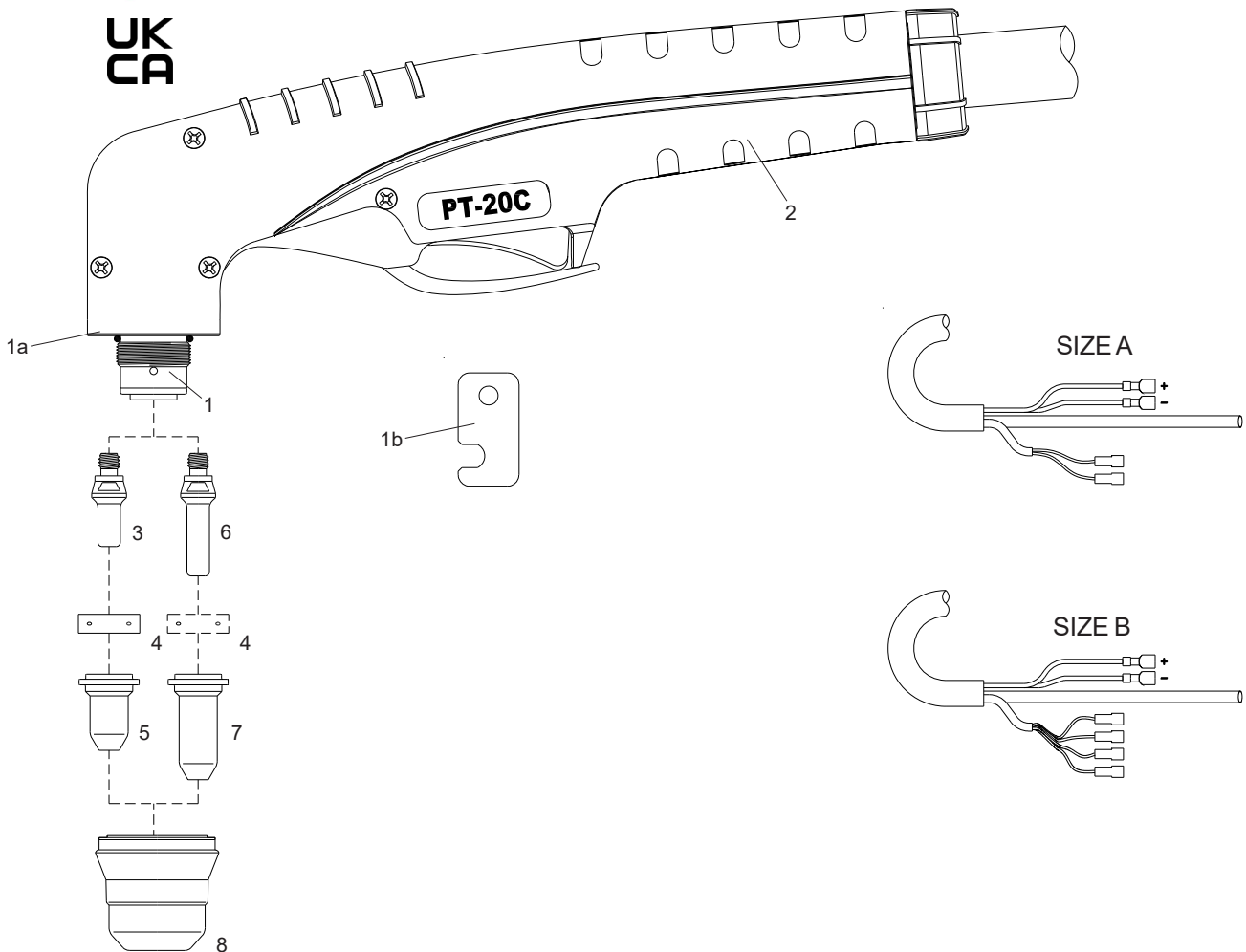
● **Jobb teljesítmény**

● **Tisztább vágás**

● **Gyorsabb munka**

Technical Data

Current:	10-25 Amps
Duty Cycle:	25 Amps 35%
Gas:	Air/N2
Gas Pressure:	30 psi (2 bar)
Gas Flow:	65 scfh (30 lpm)
Post Flow Time:	45 sec
Pilot:	Electrode to Tip (18-22A)
Ignition:	Without HF



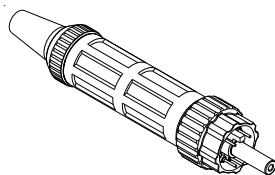
Air or N₂

PT-20C ● Standard Layout

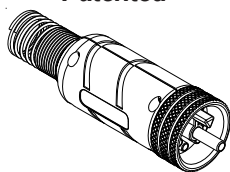
Air Filter AT-1000



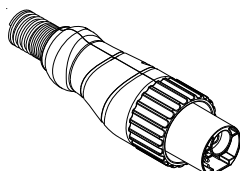
Standard Connection Euro Connector



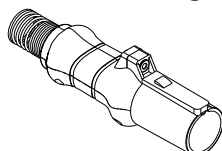
EASYFIT Connection Patented



TD Connector



HY Connection Patent Pending



Replacement Parts

Torch parts

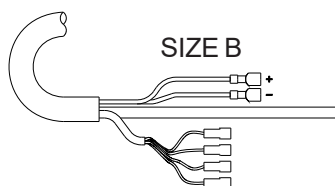
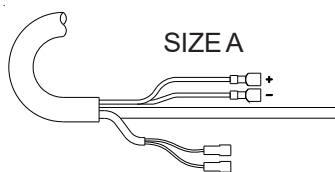
Item	Description	Code
1 ●	PT-20C Hand Torch Head	09600
1a	O-Ring	51620.60
1b	Wrench for electrode	09600.63
2 ●	Handle with parts	09605
3 ●	Electrode, Back Striking	52582
4 ●	Swirl ring	60028
5	Tip, Contact Cutting, \varnothing 0.65, 10-20A, Back Striking	51318.06
●	Tip, Contact Cutting, \varnothing 0.8, 20-30A, Back Striking	51318.08
6	Extended Electrode, Back Striking	52583
7	Extended Tip, Contact Cutting, \varnothing 0.65, 10-20A, Back Striking	51318L.06
	Extended Tip, Contact Cutting, \varnothing 0.8, 20-30A, Back Striking	51318L.08
8	Retaining Cap, 1 hole	60389K1
●	Retaining Cap, 2 holes	60389K
N/S ●	Wrench for electrode	60368

Torches and Leads

A	PT-20C Hand Torch, 4m (12.5 ft) Leads, Coaxial Cable	09620CX
B	PT-20C Hand Torch, 4m (12.5 ft) Leads, Coaxial Cable	09622CX

Accessories

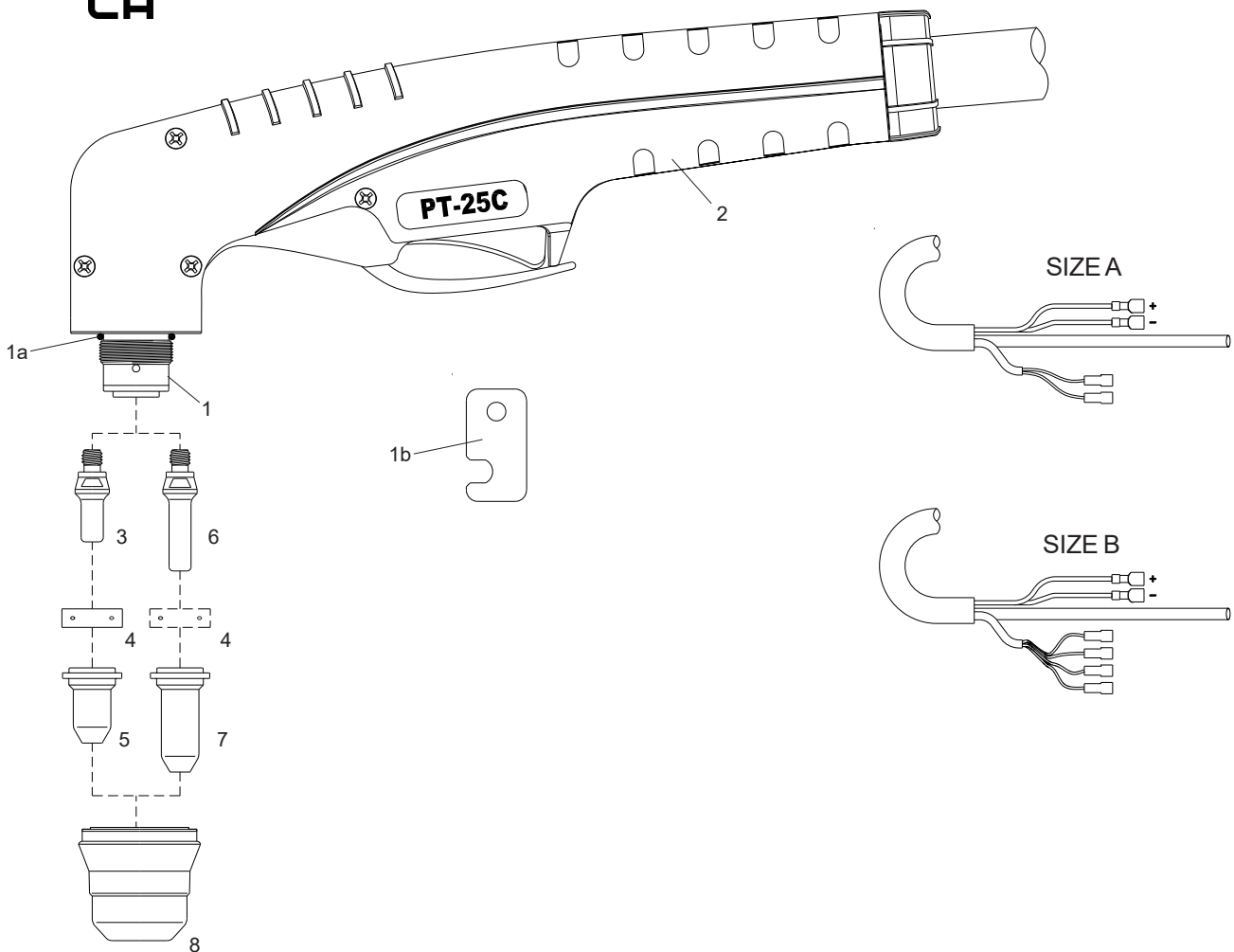
Item	Description	Code
N/S	Circle Cutting Attachment	51866



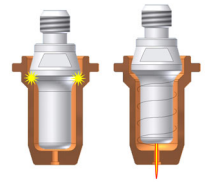
**Torches with different cable covers
and connectors available on request.**

Technical Data

Current:	10-25 Amps
Duty Cycle:	25 Amps 60%
Gas:	Air/N2
Gas Pressure:	40 psi (2.8 bar)
Gas Flow:	85 scfh (40 lpm)
Post Flow Time:	45 sec
Pilot:	Electrode to Tip (18-22A)
Ignition:	Without HF



**Back Striking
Patented**



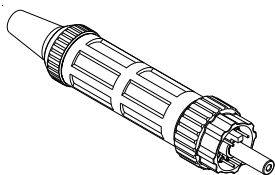
Air or N₂

PT-25C ● Standard Layout

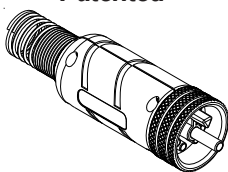
Air Filter AT-1000



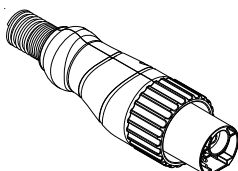
Standard Connection Euro Connector



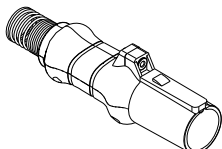
EASYFIT Connection Patented



TD Connector



HY Connection Patent Pending



Replacement Parts

Torch parts

Item	Description	Code
1	● PT-25C Hand Torch Head	09601
1a	O-Ring	51620.60
1b	Wrench for electrode	09600.63
2	● Handle with parts	09605
3	● Electrode, Back Striking	52582
4	● Swirl ring	60028
5	Tip, Contact Cutting, \varnothing 0.65, 10-20A, Back Striking	51318.06
	● Tip, Contact Cutting, \varnothing 0.8, 20-30A, Back Striking	51318.08
6	Extended Electrode, Back Striking	52583
7	Extended Tip, Contact Cutting, \varnothing 0.65, 10-20A, Back Striking	51318L.06
	Extended Tip, Contact Cutting, \varnothing 0.8, 20-30A, Back Striking	51318L.08
8	Retaining Cap, 1 hole	60389K1
	● Retaining Cap, 2 holes	60389K
	Retaining Cap, 4 holes	60389K4
N/S	● Wrench for electrode	60368

Torches and Leads

A	PT-25C Hand Torch, 4m (12.5 ft) Leads, Coaxial Cable	09625CX
B	PT-25C Hand Torch, 4m (12.5 ft) Leads, Coaxial Cable	09627CX

Accessories

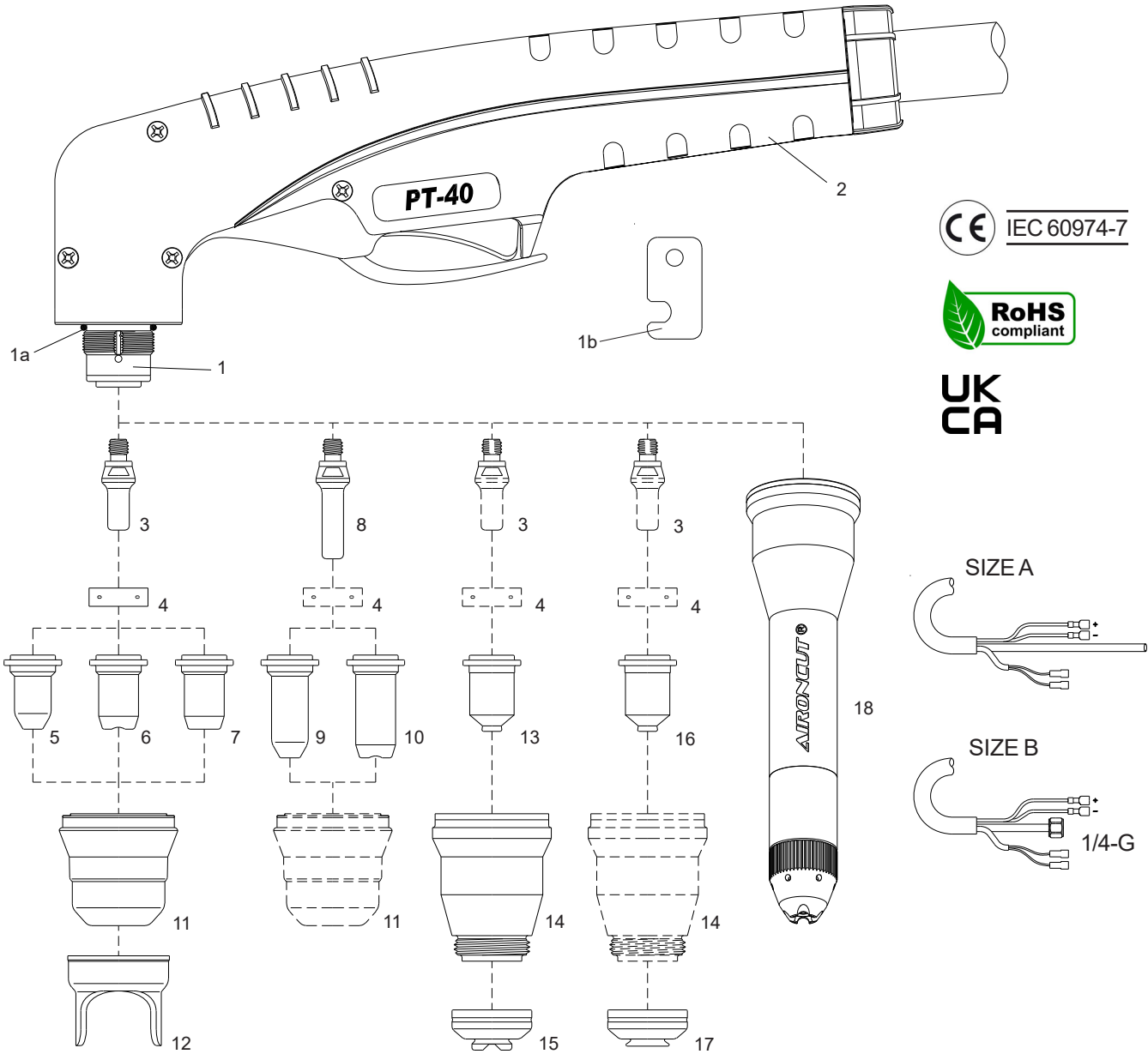
Item	Description	Code
N/S	Circle Cutting Attachment	51866

**Torches with different cable covers
and connectors available on request.**

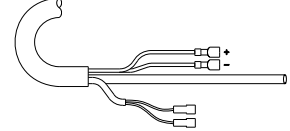
Tecnicl Data

Current: 10-40 Amps
 Duty Cycle: 40 Amps 60%
 Gas: Air/N2
 Gas Pressure: 65-75 psi (4.4-5.0 bar)
 Gas Flow: 320 scfh (150 lpm)
 Post Flow Time: 45 sec
 Pilot: Electrode to Tip (18-22A)
 Ignition: Without HF

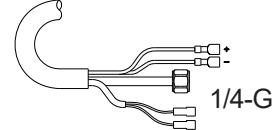
For the correct operation please use:
 3-Ways Solenoid Valve, inside orifice
 2.3-2.7mm - (0.090-0.106 inches)



SIZE A

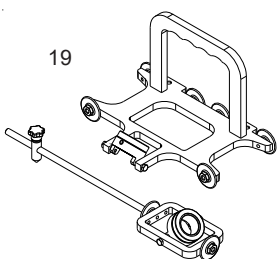


SIZE B

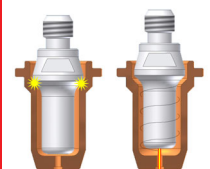


Bevel Tool

Patent pending



Back Striking
Patented



Air or N₂

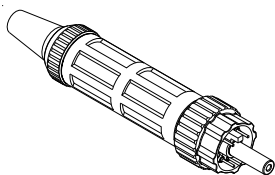
PT-40

● Standard Layout

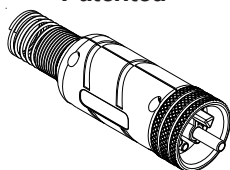
Air Filter AT-1000



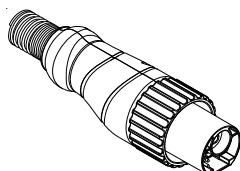
Standard Connection Euro Connector



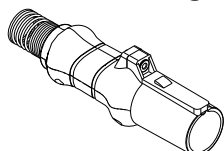
EASYFIT Connection Patented



TD Connector



HY Connection Patent Pending



Replacement Parts

Torch parts

Item	Description	Code
1	● PT-40 Hand Torch Head	09602
1a	O-Ring	51620.60
1b	Wrench for electrode	09600.63
2	● Handle with parts	09605
3	● Electrode, Back Striking	52582
4	● Swirl ring	60028
5	Tip, Contact Cutting, \varnothing 0.65, 10-20A, Back Striking	51318.06
	Tip, Contact Cutting, \varnothing 0.8, 20-30A, Back Striking	51318.08
	● Tip, Contact Cutting, \varnothing 0.9, 30-40A, Back Striking	51318.09
6	Tip, Contact Cutting, \varnothing 0.9, 30-40A, Back Striking	51312P.09
7	Flat Tip, Cutting, \varnothing 0.9, 30-40A, Back Striking	51313P.09
	Flat Tip, Cutting, \varnothing 1.0, 40-50A, Back Striking	51313P.10
8	Extended Electrode, Back Striking	52583
9	Extended Tip, Contact Cutting, \varnothing 0.65, 10-20A, Back Striking	51318L.06
	Extended Tip, Contact Cutting, \varnothing 0.8, 20-30A, Back Striking	51318L.08
	Extended Tip, Contact Cutting, \varnothing 0.9, 30-40A, Back Striking	51318L.09
10	Extended Tip, Contact Cutting, \varnothing 0.9, 30-40A, Back Striking	51314.09
11	● Retaining Cap, 6 holes	60389
	Retaining Cap, 6 holes, Maximum Life	60389S
12	Double Pointed Spacer (for use with item 5 and 7 only)	60432
N/S	● Wrench for electrode	60368

Torches and Leads

A	PT-40 Hand Torch, 4m (12.5 ft) Leads, Coaxial Cable	09630CX
	PT-40 Hand Torch, 6m (20 ft) Leads, Coaxial Cable	09631CX
B	PT-40 Hand Torch, 4m (12.5 ft) Leads, Coaxial Cable	09632CX
	PT-40 Hand Torch, 6m (20 ft) Leads, Coaxial Cable	09633CX

Accessories

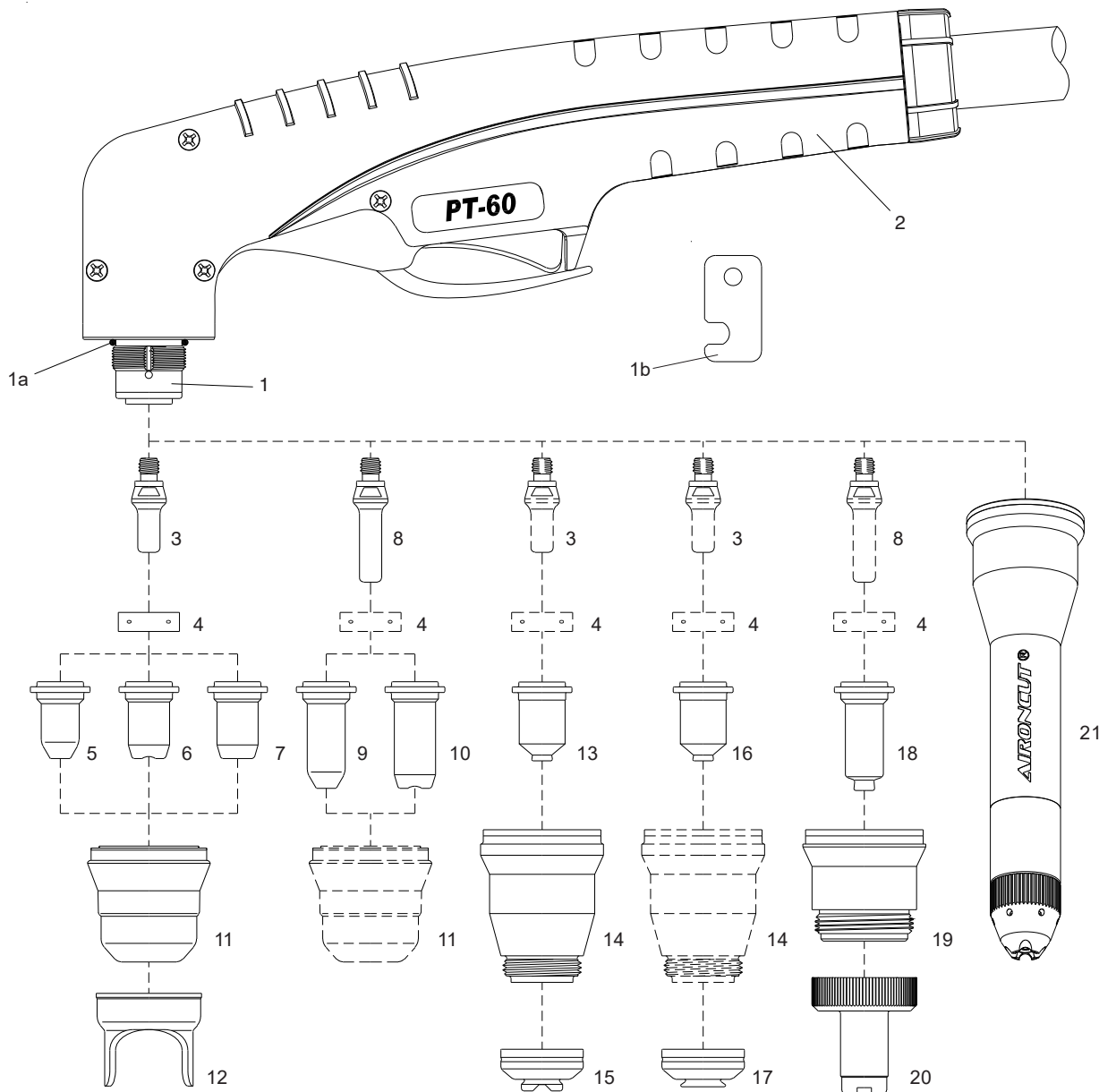
Item	Description	Code
13	Contact Tip, \varnothing 0.9, 30-40A, Back Striking	51318C.09
	Contact Tip, \varnothing 1.0, 40-50A, Back Striking	51318C.10
14	Shield Cup Body	60389C
15	Shield Cap, Hand	60485
16	Tip, Gouging, 40A	51318G.10
17	Shield Cap, Gouging	60486
21	AIRONCUT ® Standard Kit 40A Cutting for more informations, see page 10	53050
N/S	Circle Cutting Attachment	51866
19	BEVEL TOOL (for use with extended parts)	51880

**Torches with different cable covers
and connectors available on request.**

Tecnical Data

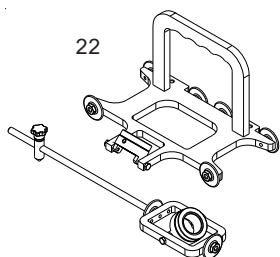
Current: 10-60 Amps
 Duty Cycle: 60 Amps 80%
 Gas: Air/N2
 Gas Pressure: 65-75 psi (4.4-5.0 bar)
 Gas Flow: 320 scfh (150 lpm)
 Post Flow Time: 45 sec
 Pilot: Electrode to Tip (18-22A)
 Ignition: Without HF

For the correct operation please use:
 3-Ways Solenoid Valve, inside orifice
 2.3-2.7mm - (0.090-0.106 inches)

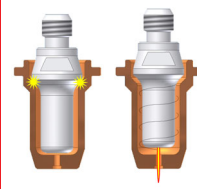


Bevel Tool

Patent pending



**Back Striking
 Patented**



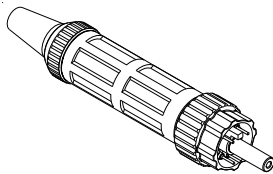
Air or N₂

PT-60 ● Standard Layout

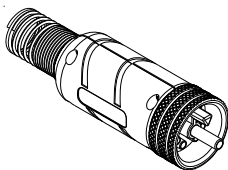
Air Filter AT-1000



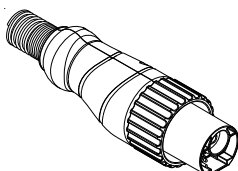
Standard Connection Euro Connector



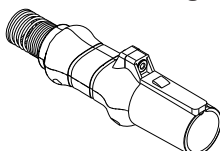
EASYFIT Connection Patented



TD Connector



HY Connection Patent Pending



Replacement Parts

Torch parts

Item	Description	Code
1 ●	PT-60 Hand Torch Head	09603
1a	O-Ring	51620.60
1b	Wrench for electrode	09600.63
2 ●	Handle with parts	09605
3 ●	Electrode, Back Striking	52582
4 ●	Swirl ring	60028
5	Tip, Contact Cutting, \varnothing 0.65, 10-20A, Back Striking	51318.06
	Tip, Contact Cutting, \varnothing 0.8, 20-30A, Back Striking	51318.08
	Tip, Contact Cutting, \varnothing 0.9, 30-40A, Back Striking	51318.09
6	Tip, Contact Cutting, \varnothing 0.9, 30-40A, Back Striking	51312P.09
7	Flat Tip, Cutting, \varnothing 1.0, 40-50A, Back Striking	51313P.10
●	Flat Tip, Cutting, \varnothing 1.1, 50-60A, Back Striking	51313P.11
8	Extended Electrode, Back Striking	52583
9	Extended Tip, Contact Cutting, \varnothing 0.65, 10-20A, Back Striking	51318L.06
	Extended Tip, Contact Cutting, \varnothing 0.8, 20-30A, Back Striking	51318L.08
	Extended Tip, Contact Cutting, \varnothing 0.9, 30-40A, Back Striking	51318L.09
10	Extended Tip, Contact Cutting, \varnothing 0.9, 30-40A, Back Striking	51314.09
11 ●	Retaining Cap, 6 holes	60389
	Retaining Cap, 6 holes, Maximum Life	60389S
12 ●	Double Pointed Spacer (for use with item 5 and 7 only)	60432
N/S ●	Wrench for electrode	60368

Torches and Leads

PT-60	Hand Torch, 6m (20 ft) Leads, Coaxial Cable	09637CX
PT-60	Hand Torch, 12m (40 ft) Leads, Coaxial Cable	09637CX-12

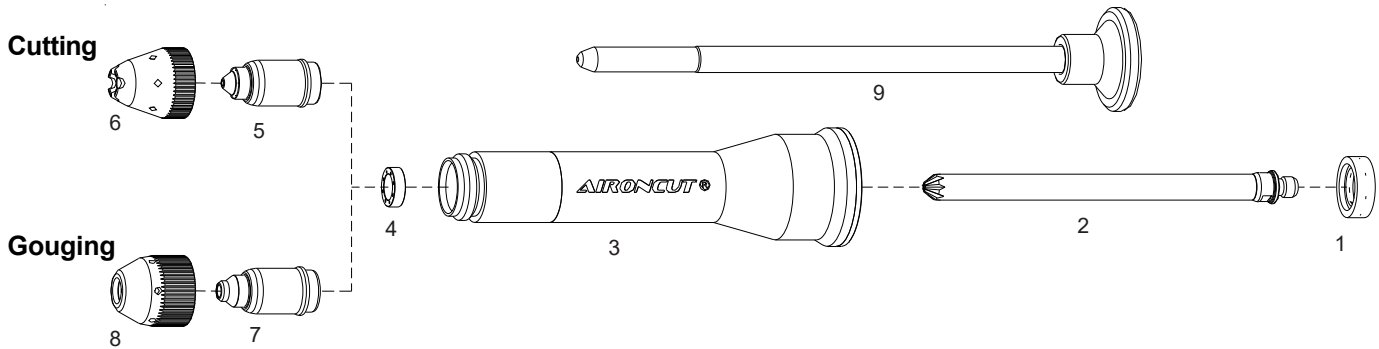
Accessories

Item	Description	Code
13	Contact Tip, \varnothing 0.9, 30-40A, Back Striking	51318C.09
	Contact Tip, \varnothing 1.0, 40-50A, Back Striking	51318C.10
	Contact Tip, \varnothing 1.1, 50-60A, Back Striking	51318C.11
14	Shield Cup Body	60389C
15	Shield Cap, Hand	60487
16	Tip, Gouging, 40-60A	51318G.10
17	Shield Cap, Gouging	60486
18	Extended Shielded Tip, \varnothing 0.9, 40A, Back Striking	51318LC.09
	Extended Shielded Tip, \varnothing 1.0, 50A, Back Striking	51318LC.10
	Extended Shielded Tip, \varnothing 1.1, 60A, Back Striking	51318LC.11
19	Shield Cup Body	60389LC
20	Extended Shield Cap 40-60A	60512L
21	AIRONCUT ® Standard Kit 40A Cutting for more informations, see page 10	53050
N/S	Circle Cutting Attachment	51866
22	BEVEL TOOL (for use with extended parts)	51880

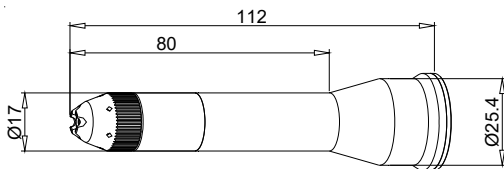
**Torches with different cable covers
and connectors available on request.**

AIRONCUT®

New high visibility consumable system
to cut inaccessible parts.



For gouging use maximum 4 bar



53050 Standard Kit 40A Cutting

Packaging containing ✕

#	Code	Description	Pkg
1	53023 ✕	Swirl Ring 20-70A	2
2	53002 ✕	Electrode	3
3	53010 ✕	Shield Cup Body	1
4	53022 ✕	Vortex Ring	3
5	53031 ✕	Tip 20-45A	5
	53032	Tip 60A	5
6	53047 ✕	Shield Cap Cutting	5
7	53036	Tip 50A Gouging	5
8	53046	Shield Cap Gouging	5
9	53080 ✕	Extractor for tip	1

BXAPT60-AC



BXAPT60-AC

Special Box

Code	Description	Qty
53023	Swirl Ring 20-60A	1
53002	Electrode	2
53022	Vortex Ring	1
53031	Tip 20-45A	3
53032	Tip 60A	3
53047	Shield Cap Cutting	1
53036	Tip 50A Gouging	3
53046	Shield Cap Gouging	1
53050	Standard Kit 40A Cutting	1

IT Util. Pat. Pend.:
N°IT202021000001583

40A Max Thickness 6 mm
60A Max Thickness 8 mm

AIRONCUT®

**New high visibility consumable system
to cut inaccessible parts.**



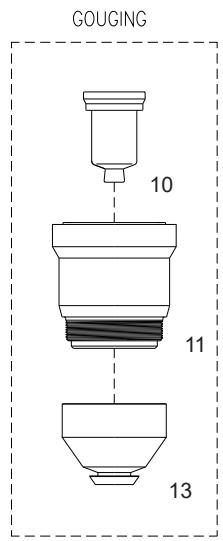
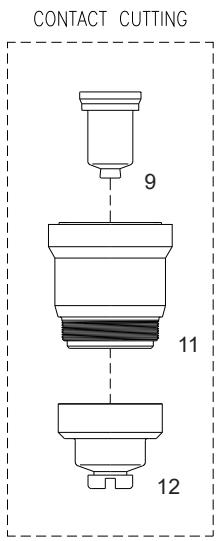
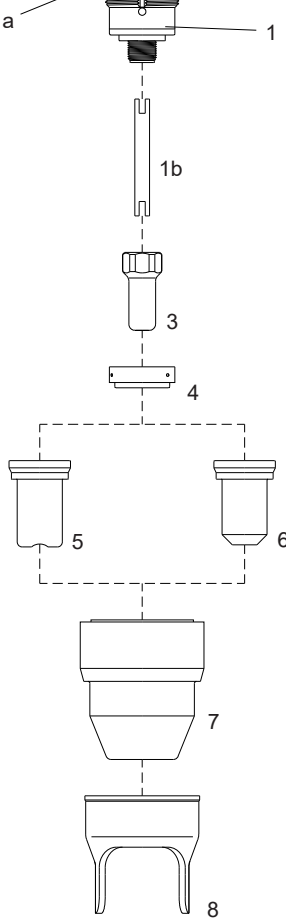
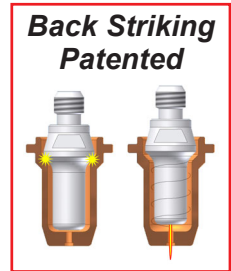
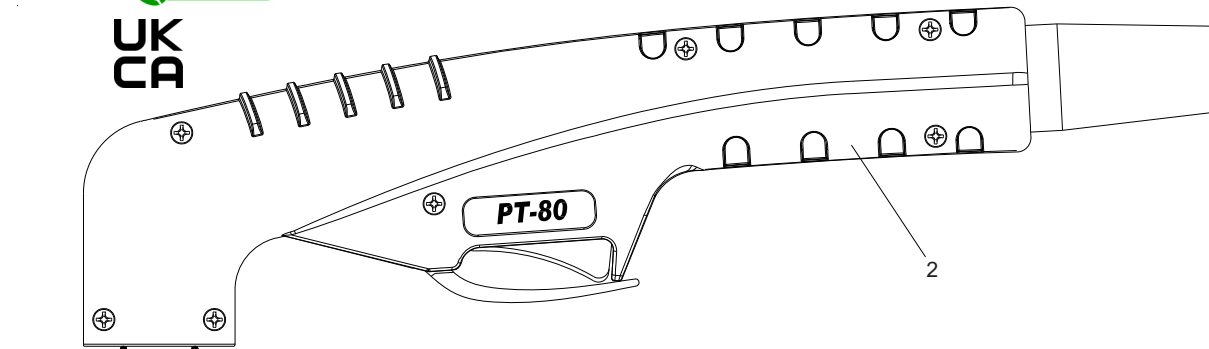
Tecnicl Data

Current: 30-80 Amps
 Duty Cycle: 80 Amps 60%
 Gas: Air/N2
 Gas Pressure: 65-75 psi (4.4-5.0 bar)
 Gas Flow: 340 scfh (160 lpm)
 Post Flow Time: 45 sec
 Pilot: Electrode to Tip (18-22A)
 Ignition: Without HF

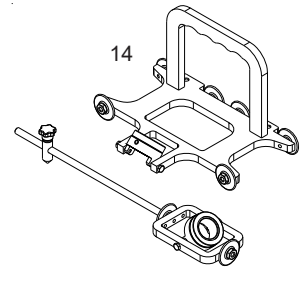
For the correct operation please use:
 3-Ways Solenoid Valve, inside orifice
 2.7-3.0 mm - (0.106-0.118 inches)



UK
CA



Bevel Tool
 Patent pending



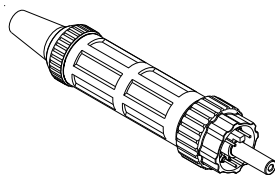
Air or N₂

PT-80 ● Standard Layout

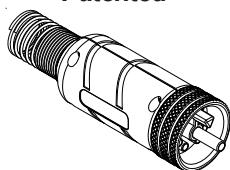
Air Filter AT-1000



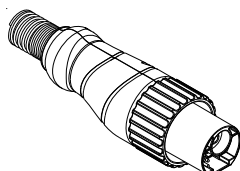
Standard Connection Euro Connector



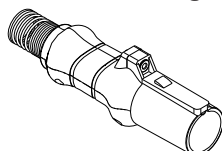
EASYFIT Connection Patented



TD Connector



HY Connection Patent Pending



Replacement Parts

Torch parts

Item	Description	Code
1	● PT-80 Hand Torch Head	09800
1a	O-Ring	51620.60
1b	Cooling Tube	09800.42
1c	Wrench for electrode	60368
2	● Handle with parts	09705
3	● Electrode, Back Striking	52558
4	● Swirl ring	60027
5	Tip, Contact Cutting, \varnothing 0.9, 30-40A, Back Striking	51310.09
6	Tip, Cutting, \varnothing 1.0, 40-50A, Back Striking	51311.10
	Tip, Cutting, \varnothing 1.1, 50-60A, Back Striking	51311.11
	Tip, Cutting, \varnothing 1.2, 60-70A, Back Striking	51311.12
	● Tip, Cutting, \varnothing 1.3, 70-80A, Back Striking	51311.13
7	● Retaining Cap	60510
8	● Double Pointed Spacer (for use with item 6 only)	60434
N/S	● Wrench for electrode	60368

Torches and Leads

PT-80	Hand Torch, 6m (20 ft) Leads, Coaxial Cable	09821CX
PT-80	Hand Torch, 12m (40 ft) Leads, Coaxial Cable	09826CX

Accessories

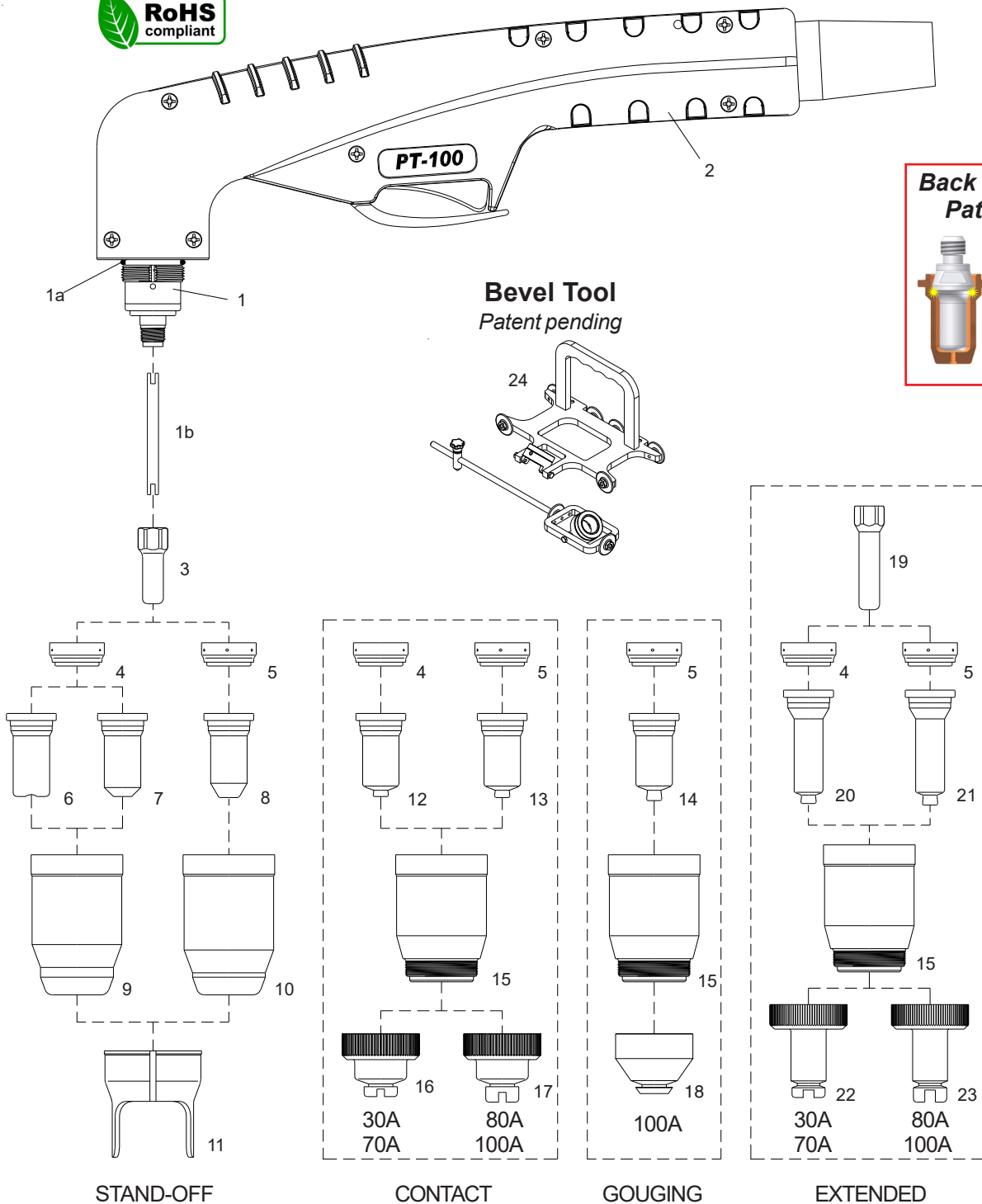
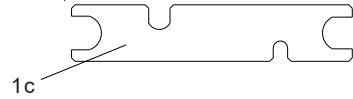
Item	Description	Code
9	Contact Tip, \varnothing 1.0, 40-50A, Back Striking	51311S.10
	Contact Tip, \varnothing 1.1, 50-60A, Back Striking	51311S.11
	Contact Tip, \varnothing 1.2, 60-70A, Back Striking	51311S.12
	Contact Tip, \varnothing 1.3, 70-80A, Back Striking	51311S.13
10	Tip, Gouging, 80A, Back Striking	51311G.16
11	Shield Cup Body	60511
12	Shield Cap, Hand	60504
13	Shield Cap, Gouging	60508
N/S	Circle Cutting Attachment	51853
14	BEVEL TOOL	51880

**Torches with different cable covers
and connectors available on request.**

Tecnicl Data

Current: 30-100 Amps
 Duty Cycle: 100 Amps 60%
 Gas: Air/N2
 Gas Pressure: 70-80 psi (4.8-5.5 bar)
 Gas Flow: 510 scfh (240 lpm)
 Post Flow Time: 45 sec
 Pilot: Electrode to Tip (18-22A)
 Ignition: Without HF

For the correct operation please use:
 3-Ways Solenoid Valve, inside orifice
 3.5-4.0mm - (0.138-0.157 inches)



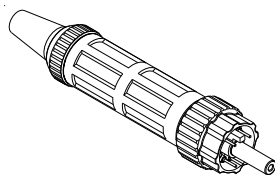
Air or N₂

PT-100 ● Standard Layout

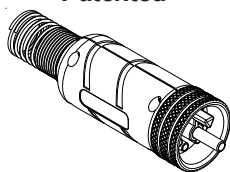
Air Filter AT-1000



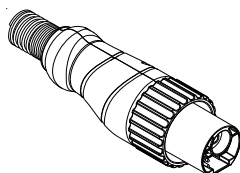
Standard Connection Euro Connector



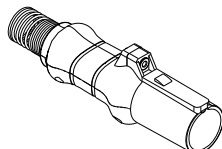
EASYFIT Connection Patented



TD Connector



HY Connection Patent Pending



Replacement Parts

Torch parts

Item	Description	Code
1 ●	PT-100 Hand Torch Head	09700
1a	O-Ring	51190.41
1b	Cooling Tube	09700.48
1c	Wrench for electrode	60368
2 ●	Handle with parts	09705
3 ●	Electrode, Back Striking	52556
4	Swirl ring, 30-70A	60025
5 ●	Swirl ring, 80-100A and Gouging	60026
6	Tip, Contact Cutting, \varnothing 0.9, 30-40A, Back Striking	51245.09
7	Tip, Cutting, \varnothing 1.0, 40-50A, Back Striking	51246.10
	Tip, Cutting, \varnothing 1.1, 50-60A, Back Striking	51246.11
	Tip, Cutting, \varnothing 1.2, 60-70A, Back Striking	51246.12
8	Tip, Cutting, \varnothing 1.4, 80-90A, Back Striking	51248.14
●	Tip, Cutting, \varnothing 1.5, 100A, Back Striking	51248.15
9	Retaining Cap, 30-70A	60500
10 ●	Retaining Cap, 80-100A	60501
11 ●	Double Pointed Spacer (for use with item. 7 and 8 only)	60444
N/S ●	Wrench for electrode	60368

Torches and Leads

PT-100	Hand Torch, 6m (20 ft) Leads, Coaxial Cable	09721CX
PT-100	Hand Torch, 12m (40 ft) Leads, Coaxial Cable	09726CX

Accessories

Item	Description	Code
12	Contact Tip, \varnothing 1.0, 40-50A, Back Striking	51276.10
	Contact Tip, \varnothing 1.1, 50-60A, Back Striking	51276.11
	Contact Tip, \varnothing 1.2, 60-70A, Back Striking	51276.12
13	Contact Tip, \varnothing 1.4, 80-90A, Back Striking	51278.14
	Contact Tip, \varnothing 1.5, 100A, Back Striking	51278.15
14	Tip, Gouging, 100A, Back Striking	51278G.22
15	Shield Cup Body	60502
16	Shield Cap, Hand, 40-70A	60504
17	Shield Cap, Hand, 80-100A	60505
18	Shield Cap, Gouging	60508
19	Extended Electrode	52556L
20	Extended Shielded Tip, \varnothing 1.0, 40-50A,	51276L.10
	Extended Shielded Tip, \varnothing 1.1, 50-60A,	51276L.11
	Extended Shielded Tip, \varnothing 1.2, 60-70A,	51276L.12
21	Extended Shielded Tip, \varnothing 1.4, 80-90A,	51278L.14
	Extended Shielded Tip, \varnothing 1.5, 100A,	51278L.15
22	Extended Shielded Cap, Hand, 40-70A	60504L
23	Extended Shielded Cap, Hand, 80-100A	60505L
N/S	Circle Cutting Attachment	51864
24	BEVEL TOOL	51887

**Torches with different cable covers
and connectors available on request.**

PT-105Plus

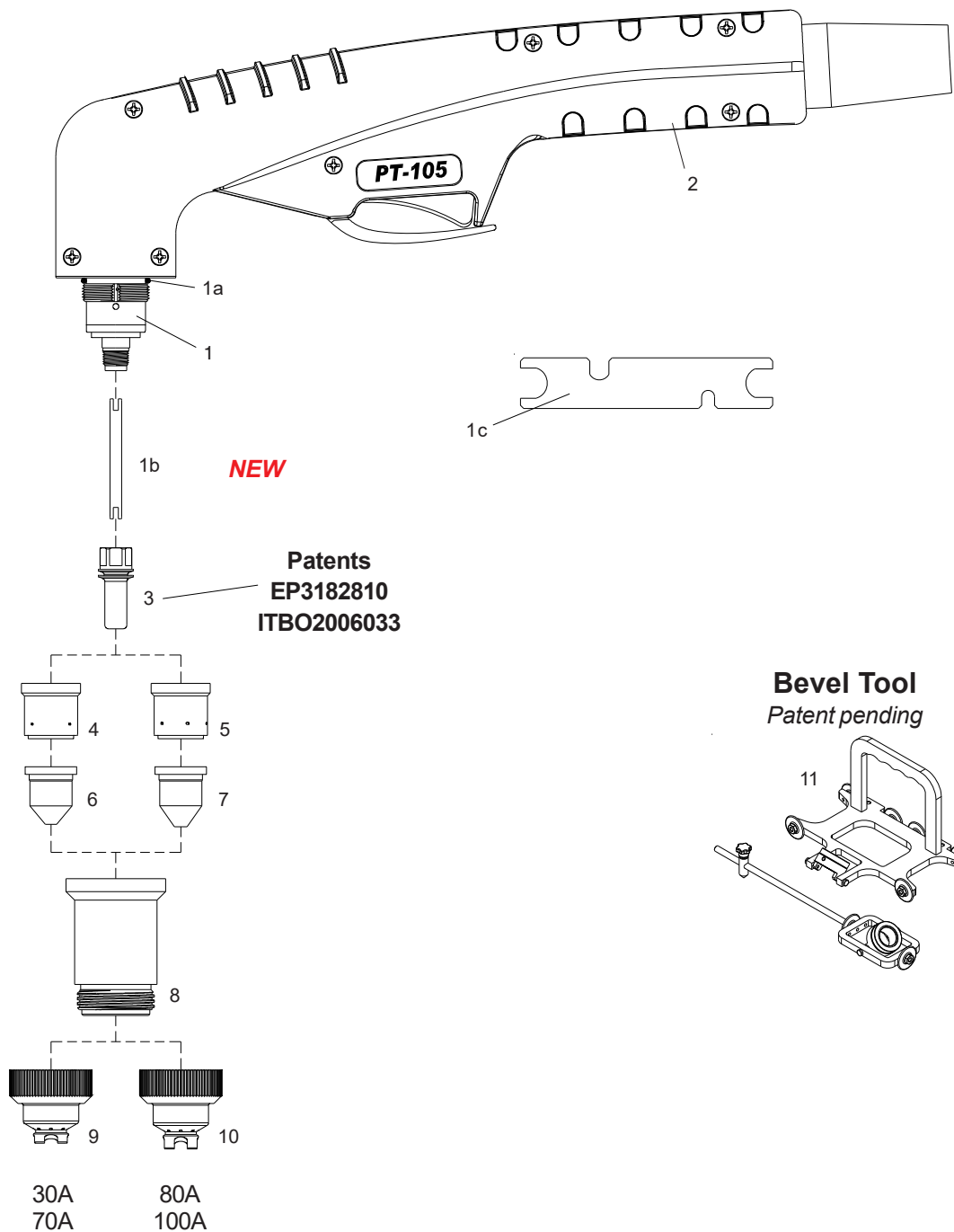
Technical Data

Current:	30-100 Amps
Duty Cycle:	100 Amps 60%
Gas:	Air/N2
Gas Pressure:	70-80 psi (4.8-5.5 bar)
Gas Flow:	510 scfh (240 lpm)
Post Flow Time:	45 sec
Pilot:	Electrode to Tip (18-22A)
Ignition:	Without HF

For the correct operation please use:
3-Ways Solenoid Valve, inside orifice
3.5-4.0mm - (0.138-0.157 inches)



UK
CA



PT-105Plus

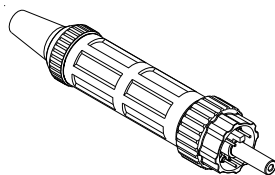
Air or N₂

PT-105Plus ● Standard Layout

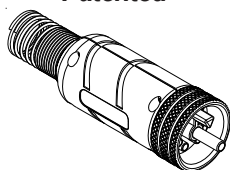
Air Filter AT-1000



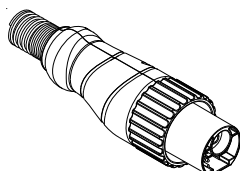
Standard Connection Euro Connector



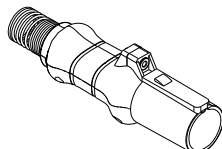
EASYFIT Connection Patented



TD Connector



HY Connection Patent Pending



Replacement Parts

Torch parts

Item	Description	Code
1 ●	PT-105 Plus Hand Torch Head	09700P
1a	O-Ring	51190.41
1b	Cooling Tube, NEW	09700.62
1c	Wrench for electrode	60368
2 ●	Handle with parts	09705
3 ●	Electrode	52559
4	Swirl ring, 30-70A	60021
5 ●	Swirl ring, 80-100A	60022
6	Tip, Cutting, 40A	51257.09
	Tip, Cutting, 60A	51257.11
7	Tip, Cutting, 80A	51258.13
●	Tip, Cutting, 100A	51258.15
8 ●	Shield Cup Body	60499
9	Shield Cap, Hand, 30-70A	60514
10 ●	Shield Cap, Hand, 80-100A	60515
N/S ●	Wrench for electrode	60368

Torches and Leads

PT-105 Plus Hand Torch, 6m (20 ft) Leads, Coaxial Cable	09721PX
PT-105 Plus Hand Torch, 12m (40 ft) Leads, Coaxial Cable	09726PX

Accessories

N/S	Circle Cutting Attachment	51865
11	BEVEL TOOL	51880

**Torches with different cable covers
and connectors available on request.**

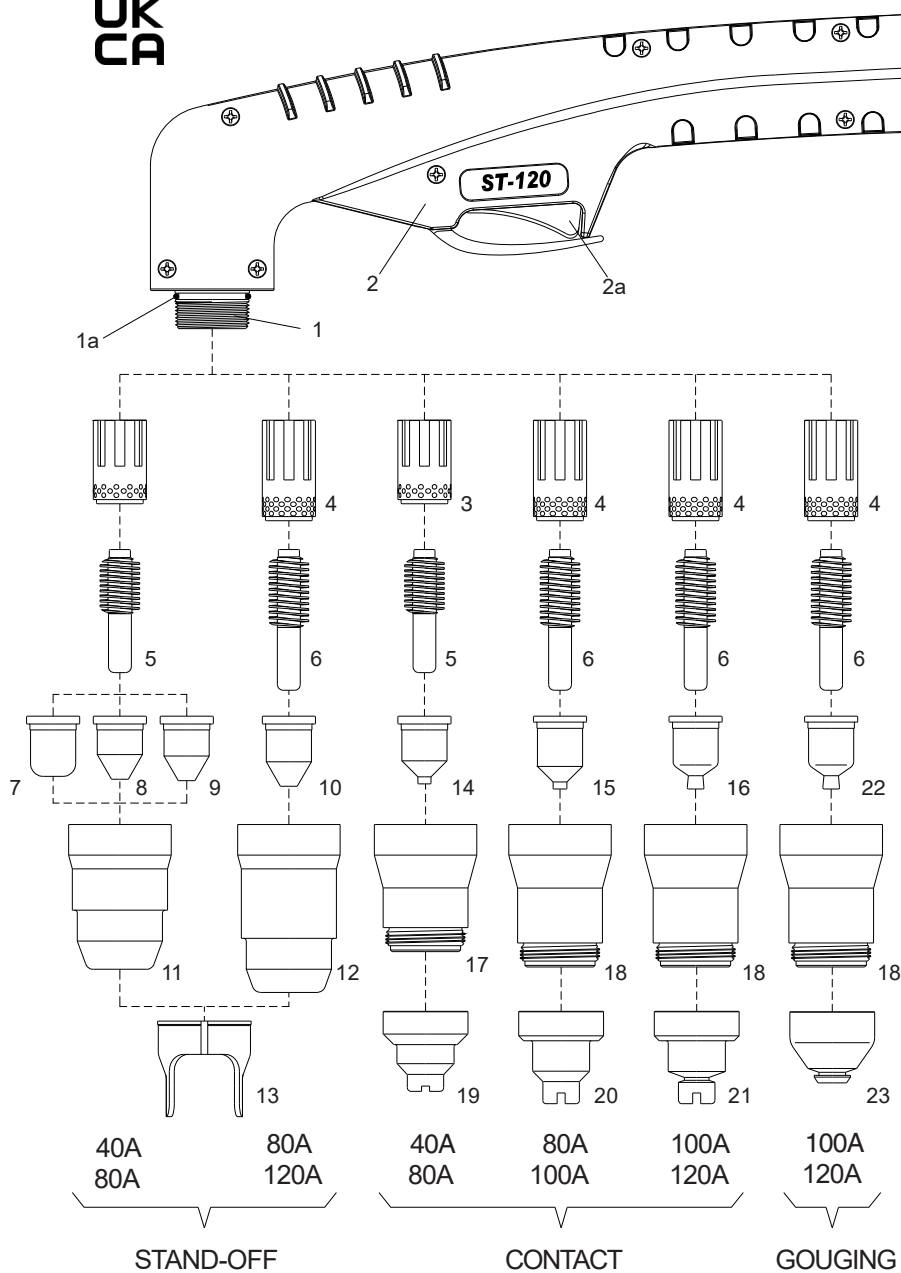
Tecnicl Data

Current: 40-120 Amps
 Duty Cycle: 120 Amps 60%
 Gas: Air/N2
 Gas Pressure: 72-87 PSI (5.0-6.0 bar)
 Gas Flow: 630 SCFH (295 lpm)
 Post Flow Time: 45 sec
 Pilot: Electrode to Tip (18-22A)
 Ignition: Without HF

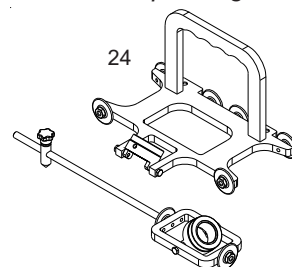
For the correct operation please use:
 3-Ways Solenoid Valve, inside orifice
 4.5-5.5mm - (0.178-0.217 inches)



**UK
CA**



Bevel Tool
 Patent pending



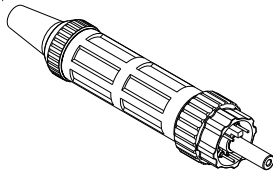
Air or N₂

ST-120 ● Standard Layout

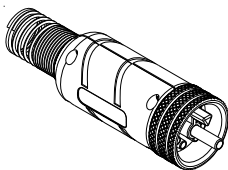
Air Filter AT-1000



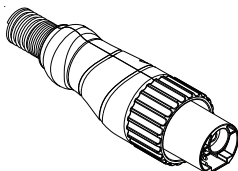
Standard Connection Euro Connector



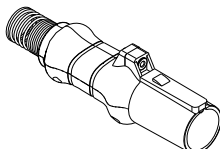
EASYFIT Connection Patented



TD Connector



HY Connection Patent Pending



Replacement Parts

Torch parts

Item	Description	Code
1	● ST-120 Hand Torch Head	03800
1a	O-Ring	02800.60
2	● Handle with Switch	09705
2a	● Switch	07301.20
3	Swirl ring, 40-80A	60043E
	Swirl ring, 40-80A Maximum Life	60043
4	● Swirl ring, 80-120A	60044E
	Swirl ring, 80-120A Maximum Life	60044
5	Electrode, 40-80A	52675
6	● Electrode, 80-120A	52676
7	Tip, Cutting, 40A	51402
8	Tip, Cutting, 60A	51403
9	Tip, Cutting, 80A	51404
10	Tip, Cutting, 100A	51408
	● Tip, Cutting, 120A	51408T
11	Retaining Cap, 40-80A	60493
12	● Retaining Cap, 80-120A	60494
13	● Double Pointed Spacer	60434
14	Contact Tip, Cutting, 40A	51405.10
	Contact Tip, Cutting, 60A	51405.12
	Contact Tip, Cutting, 80A	51405.14
15	Contact Tip, Cutting, 100A	51406
16	Contact Tip, Cutting, 120A	51406T
17	Shield Cup Body, 40-80A	60495
18	Shield Cup Body, 80-120A	60496
19	Shield Cap, Hand, 40-80A	51981/TD
20	Shield Cap, Hand, 80-100A	51983/TD
21	Shield Cap, Hand, 100-120A	51988
22	Contact Tip, Gouging, 100-120A	51409.24
23	Shield Cap, Gouging, 100-120A	51989G

Torches and Leads

ST-120	Hand Torch, 6m (20 ft) Leads, Coaxial Cable	03821CX
ST-120	Hand Torch, 12m (40 ft) Leads, Coaxial Cable	03826CX
ST-120	Lead Assembly, Hand, 6m (20 ft) Length, Coaxial Cable	09781CX
ST-120	Lead Assembly, Hand, 12m (40 ft) Length, Coaxial Cable	09786CX

Accessories

N/S	Circle Cutting Attachment	51865
24	BEVEL TOOL	51880

**Torches with different cable covers
and connectors available on request.**