

SYRIUS®

LT-50

Kompatibilis: CEBORA® P50

LT-81

Kompatibilis: TRAFIMET® A80 - Ergocut A81

LT-101

Kompatibilis: TRAFIMET® A90 - Ergocut A101

LT-141

Kompatibilis: TRAFIMET® A140 - Ergocut A141

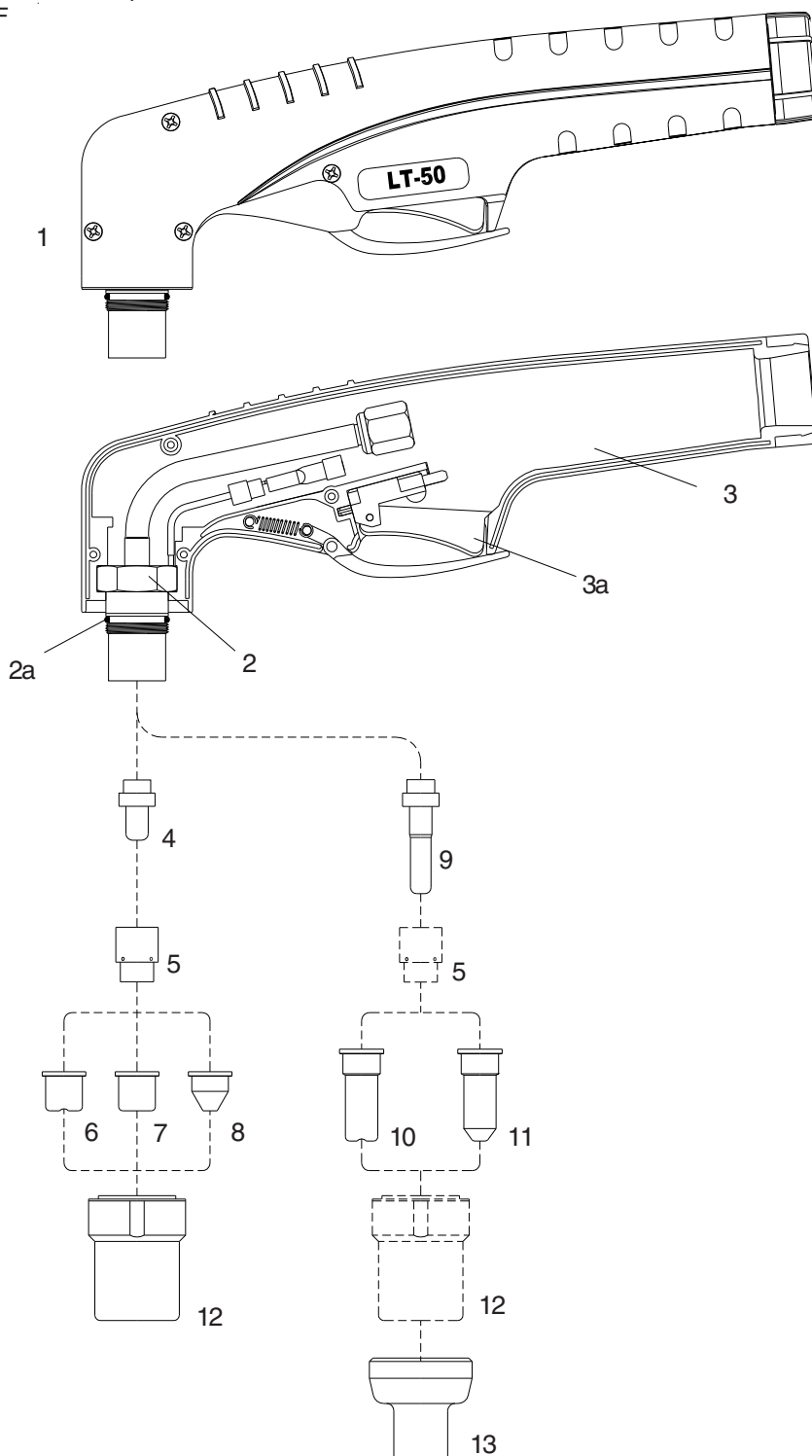
● **Jobb teljesítmény**

● **Tisztább vágás**

● **Gyorsabb munka**

Suitable for: CEBORA® P50

Max Current : 50 Amps
Duty Cycle: 50 Amps- 60%
Gas: Air
Gas Pressure: 70 psi (4.5-5.0 bar)
Gas Flow: 250 scfh (120 lpm)
Post Flow Time: 90 sec. recommended
Pilot : Electrode to Tip
Ignition: HF



● Standard Layout



IEC 60974-7

Replacement Parts Suitable for: CEBORA® P50

Torch parts

Item#	ref.	Catalog #	Description
1		01001/KIT	Torch Head complete with handle
2	●	01001	Hand torch head
2a	●	01000.60	O - Ring
3	●	09606	Handgrip with microswitch
3a	●	07301.20	Switch
4	● 1521	52512/L	Electrode - Hf.
5	●	60001	Swirl ring
6	● 1304	51100	Tip ø 1.0
	1396	51095	Tip long life ø 1.0
		51100/S	Tip long life ø 1.1
7		51099	Flat tip ø 1.0.
8	1305	51098	Conical tip ø 1.0 (Lo - Amp.)
9	1518	52513/L	Extended electrode - Hf.
10	1370	51102	Extended tip, ø 1.0
	1395	51095/L	Extended tip, long life ø 1.0
		51102/S	Extended tip, long life ø 1.1
11	1306	51101	Extended conical tip ø 1.0 (Lo - Amp.)
12	● 5.710.121	60320	Nozzle retaining cap
13		51965	Shield cup, hand (for extended tips 51095/L, 51102/S and 51101)

Accessories

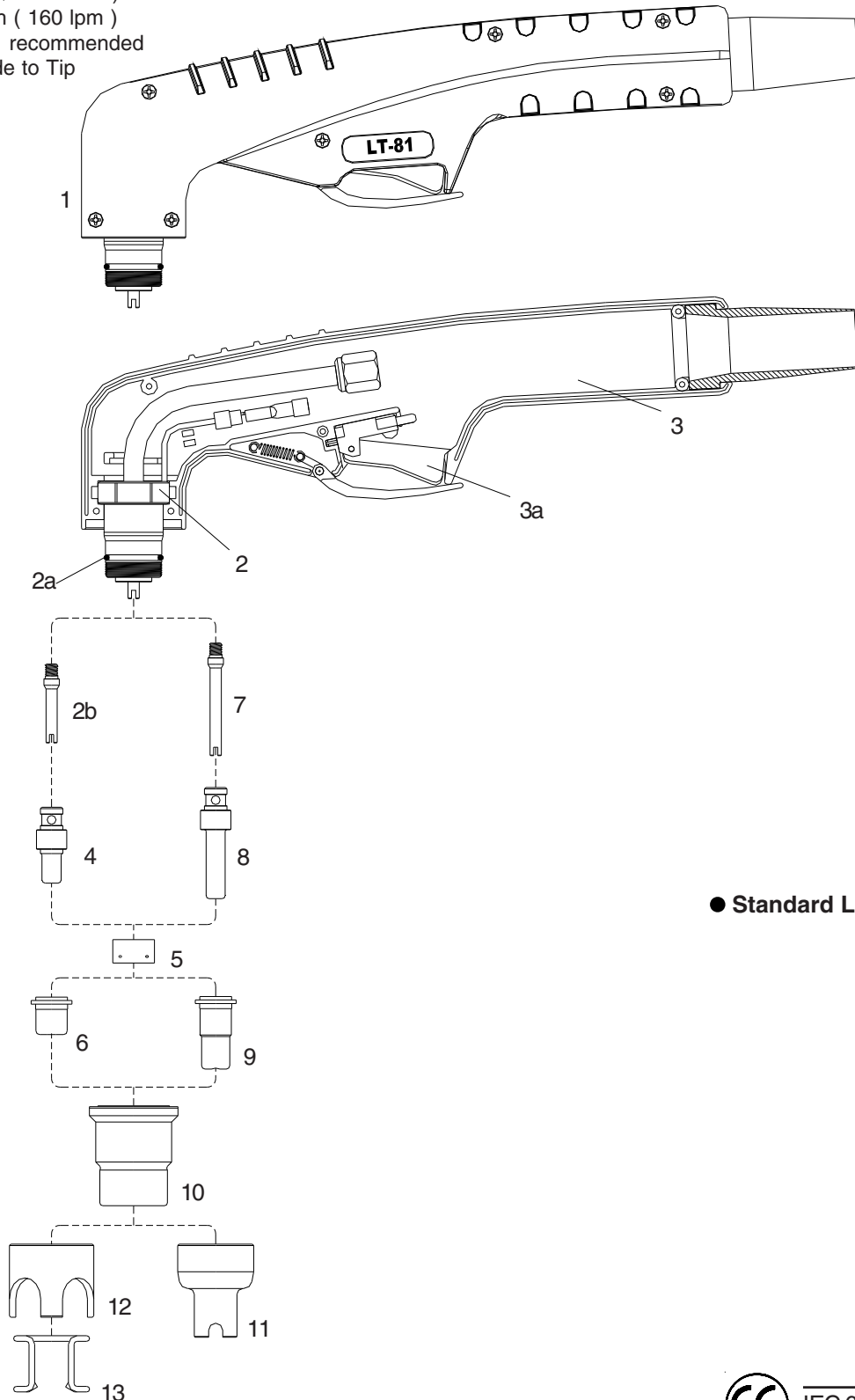
166	51850	Circle cutting attachment
154	51806	Cutting guide

Torches and Leads

see page # 22

Suitable for: TRAFIMET® A80 - Ergocut A81

Max Current : 80 Amps
Duty Cycle: 80 Amps- 60%
Gas: Air
Gas Pressure: 70 psi (4.5-5.0 bar)
Gas Flow: 340 scfh (160 lpm)
Post Flow Time: 90 sec. recommended
Pilot : Electrode to Tip
Ignition: HF



● Standard Layout



IEC 60974-7

Replacement Parts Suitable for: TRAFIMET® A80 - Ergocut A81

Torch parts

Item#	ref.	Catalog #	Description
1	PF 0140	06802/KIT	Hand Torch Head complete with handle
2	●	06802	Hand torch head
2a	● EA 0125	07300.60	O - Ring
2b	● FH 0560	06801.42	Diffusor
3	●	09706	Handgrip with switch
3a	● BX 0020	07301.20	Switch
4	● PR 0109	52580/S	Electrode - Maximum Life
5	● PE 0107	60029	Swirl ring
6	PD0105-10	51170	Tip 1.0
	PD0105-11	51172	Tip 1.1
	● PD0105-12	51172.12	Tip 1.2
7	FH0561	06801.43	Extended diffusor
8	PR0115	52581/S	Extended electrode - Maximum Life
9	PD0106-10	51171.10	Extended tip 1.0
	PD0106-12	51173	Extended tip 1.2
10	● PC0115	60384	Nozzle retaining cap
11	CV0201	51976	Spacer for contact cutting
12	CV0033	60378	Crown spacer
13	● CV0028	51902	Spacer spring

Accessories

51861	Circle cutting attachment
51817	Cutting guide

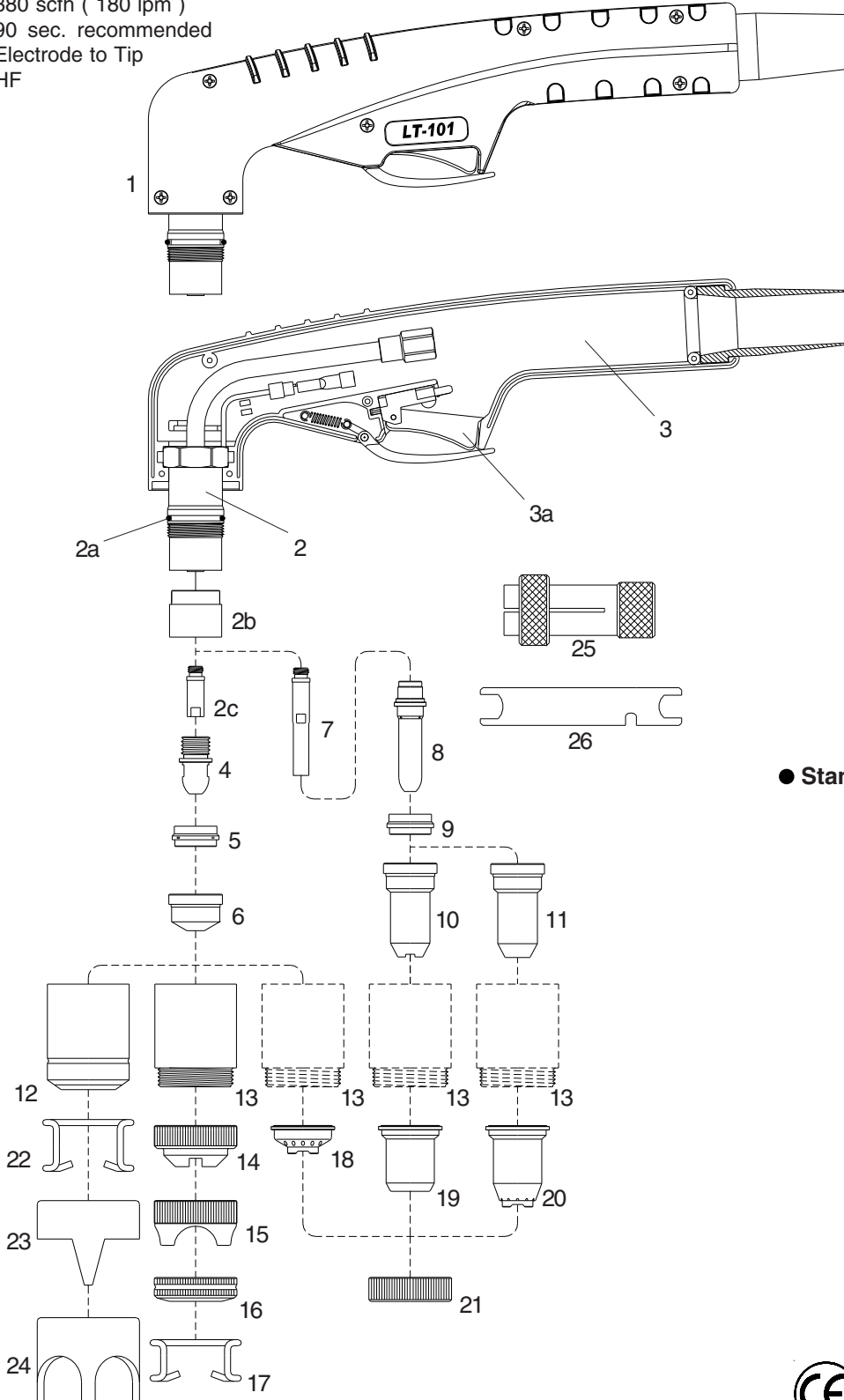
Torches and Leads

see page # 22

LT-101

Suitable for: TRAFIMET® A90 - Ergocut 101

Max Current : 100Amps
 Duty Cycle: 100 Amps - 60%
 Gas: Air
 Gas Pressure: 70 psi (4.5-5.0 bar)
 Gas Flow: 380 scfh (180 lpm)
 Post Flow Time: 90 sec. recommended
 Pilot : Electrode to Tip
 Ignition: HF



● Standard Layout



IEC 60974-7

Replacement Parts Suitable for: TRAFIMET® A90 - Ergocut 101

Torch parts

Item#	ref.	Catalog #	Description
1	PF 0145	06001/KIT	Torch Head complete with handle
2	●	06001	Hand torch head
2a	● EA 0131	06000.60	O - Ring
2b	●	60085	Front insulator
2c	●	06004	Diffusor
3	●	09706	Handgrip with microswitch
3a	● BX 0020	07301.20	Switch
4	● PR 0101	52535	Electrode
5	● PE 0101	60030	Swirl ring
6		PD 0101-11	Tip ø 1.1
		PD 0101-14	Tip ø 1.4
	●	PD 0101-17	Tip ø 1.7
7		06005	Extended Diffusor
8	PR 0116	52530	Extended electrode
9	PE 0103	60031	Insulating spacer
10	PD 0111	51149	Extended tip ø 1.2 (max 50A)
11	PD 0117-14	51149.14	Extended tip ø 1.4 - (for use with item. 25+26)
	PD 0117-17	51149.17	Extended tip ø 1.7 - (for use with item. 25+26)
	PD 0117-19	51149.19	Extended tip ø 1.9 - (for use with item. 25+26)
12	●	PC 0109/0111	60376 Nozzle retaining cap, long life
13		PC 0113/0130	60386 Contact nozzle retaining cap
		PC 0113/0130	60386/V Contact nozzle retaining cap, Max.life
14	CV 0023	51940	Spacer for contact cutting
15	CV 0039	51945	Large spacer for contact cutting
16		51952	Spring holder protection nut
17		51911	Spacer spring for code 51952
18		51950	Spacer for contact cutting, hand
19	CV 0008	51957	Shield cup, hand (max. 50A) (for use with item. 21 only)
20	CV 0009	51958	Spacer for contact cutting, hand (for use with item. 21 only)
21		51959	Locking nut
22	●	CV 0011	51910 Spacer spring
23	CV 0012	60370	Double pointed spacer
24	CV 0014	60371	Crown spacer
25	GR 60	60369	Extractor for swirl ring
26		60368	Wrench for electrode

Accessories

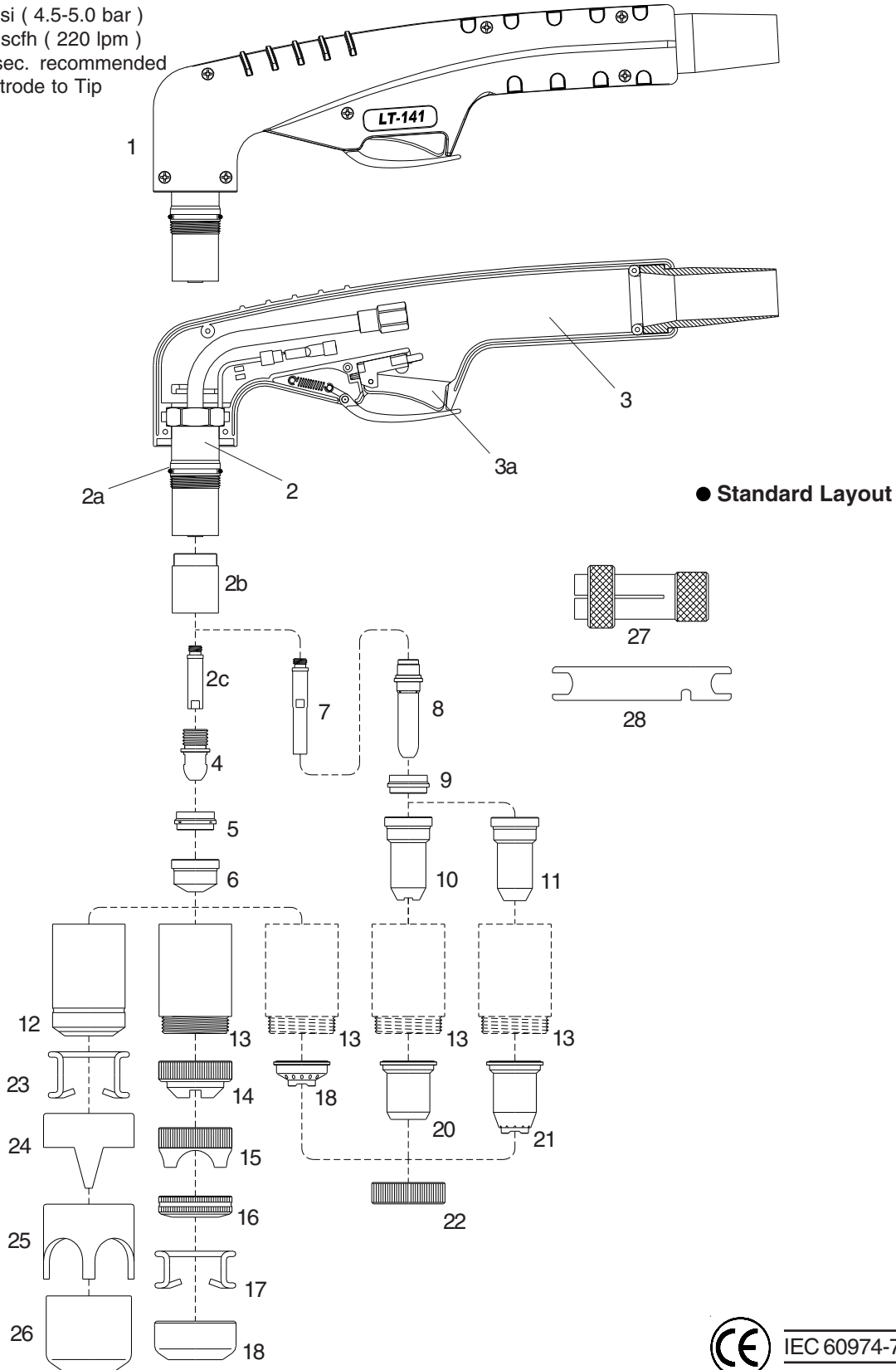
51851	Circle cutting attachment
51807	Cutting guide

Torches and Leads

see page # 22

Suitable for: TRAFIMET® A140 - Ergocut 141

Max Current : 150Amps
 Duty Cycle: 150 Amps - 60%
 Gas: Air
 Gas Pressure: 70 psi (4.5-5.0 bar)
 Gas Flow: 470 scfh (220 lpm)
 Post Flow Time: 90 sec. recommended
 Pilot : Electrode to Tip
 Ignition: HF



Replacement Parts Suitable for: TRAFIMET® A140 - Ergocut 141

Torch parts

Item#	ref.	Catalog #	Description
1	PF 0155	06201/KIT	Torch Head complete with handle
2	●	06201	Hand torch head
2a	● EA 0131	06000.60	O - Ring
2b	●	60080	Front insulator
2c	●	05004	Diffusor
3	●	09706	Handgrip with microswitch
3a	● BX 0020	07301.20	Switch
4	● PR 0101	52535	Electrode
5	● PE 0101	60030	Swirl ring
6		PD0101-11	Tip ø 1.1
		PD0101-14	Tip ø 1.4
		PD0101-17	Tip ø 1.7
	●	PD0101-19	Tip ø 1.9
		PD0101-30	Gouging tip ø 3.0
7		05005	Extended Diffusor
8	PR 0116	52530	Extended electrode
9	● PE 0103	60031	Insulating spacer
10	PD 0111	51149	Extended tip ø 1.2 (max 50A)
11	PD 0117-14	51149.14	Extended tip ø 1.4 - (for use with item. 25+26)
	PD 0117-17	51149.17	Extended tip ø 1.7 - (for use with item. 25+26)
	PD 0117-19	51149.19	Extended tip ø 1.9 - (for use with item. 25+26)
12	● PC 0101/0102	60375	Nozzle retaining cap, long life
13	PC 0103/0131	60385	Contact nozzle retaining cap
	PC 0103/0131	60385/V	Contact nozzle retaining cap, Max.life
14	CV 0023	51940	Spacer for contact cutting
15	CV 0039	51945	Large spacer for contact cutting
16		51952	Spring holder protection nut
17		51911	Spacer spring for code 51952
18		51953	Gouging spacer
19		51950	Spacer for contact cutting, hand
20	CV 0008	51957	Shield cup, hand (max. 50A) (for use with item. 21 only)
21	CV 0009	51958	Spacer for contact cutting, hand (for use with item. 21 only)
22		51959	Locking nut
23	● CV 0011	51910	Spacer spring
24	CV 0012	60370	Double pointed spacer
25	CV 0014	60371	Crown spacer
26	CV 0013	60373	Gouging spacer
27	GR 60	60369	Extractor for swirl ring
28		60368	Wrench for electrode

Accessories

51851	Circle cutting attachment
51807	Cutting guide

Torches and Leads

see page # 22

LT-50 Suitable for: CEBORA® P50

<i>ref.</i>	<i>Catalog #</i>	<i>Description</i>
1526	03050LT	Hand torch complete with 6 mts cable (1/8" connection)
1574	03051LT	Hand torch complete with 6 mts cable (central connector)
	03150LT	Hand torch complete with 12 mts cable (1/8" connection)
	03151LT	Hand torch complete with 12 mts cable (central connector)
1344	03240	Air and power cable 6 mts 1/8"
	03250	Air and power cable 12 mts 1/8"

LT-81 Suitable for: TRAFIMET® A80 - Ergocut A81

<i>ref.</i>	<i>Catalog #</i>	<i>Description</i>
PA 170/1400/1404	06820LT	Hand torch 6 mts. cable (3/8G connection)
PA 1402	06821LT	Hand torch 6 mts. cable (central connector)
PH0130/0132	06880	Air and power cable 6 mts. (3/8G)
	04270	End Fitting (1/4G)

LT-101 Suitable for: TRAFIMET® A90 - Ergocut 101

<i>ref.</i>	<i>Catalog #</i>	<i>Description</i>
PA 109/1450/1454	06050LT	Hand torch complete with 6 mts. cable (M14x1)
PA 1452	06051LT	Hand torch complete with 6 mts. cable (central connector)
PA 209	06150LT	Hand torch complete with 12 mts. cable (M14x1)
	06151LT	Hand torch complete with 12 mts. cable (central connector)
	04224	Air and power cable 6 mts. (M14x1)
	04234	Air and power cable 12 mts. (M14x1)
	04270	End Fitting (1/4G)

LT-141 Suitable for: TRAFIMET® A140 - Ergocut 141

<i>ref.</i>	<i>Catalog #</i>	<i>Description</i>
PA 101/1500/1502	06250LT	Hand torch complete with 6 mts. cable (M14x1)
PA 1504	06251LT	Hand torch complete with 6 mts. cable (central connector)
PA 102/1501	06350LT	Hand torch complete with 12 mts. cable (M14x1)
PA 1505	06351LT	Hand torch complete with 12 mts. cable (central connector)
	04220	Air and power cable 6 mts. (M14x1)
	04230	Air and power cable 12 mts. (M14x1)
	04270	End Fitting (1/4G)

Pisztolyok eltérő kábelburkolattal rendelhetők
