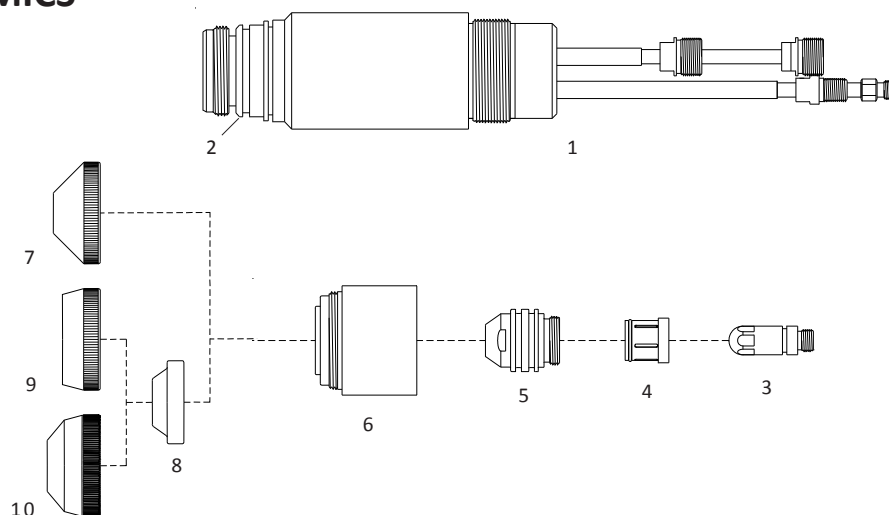


THERMAL DYNAMICS®

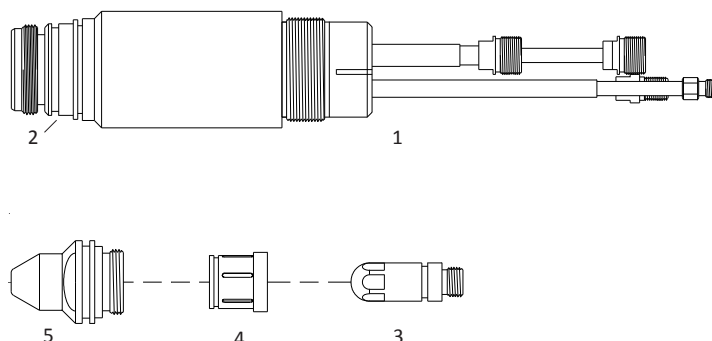
Maximizer 300®
 Merlin 1000®
 Merlin 3000®
 Merlin 6000®
 Merlin 6000 GST®



No.	Ref.	Code	Description	Pkg.	No.	Ref.	Code	Description	Pkg.
1	9-6410	08310/TD	180° Torch Head	1	5	20-1034	51354	Tip 300A	5
2	8-0538	60341.41	O-Ring	20	6	20-1002	60396	Shield cap body	1
3	20-1010	52615	Electrode O ₂ 100-225A	5		20-1002	60396S	Shield cap body fiberglass	1
	20-1018	52614	Electrode Air 50-225A	5		20-1029	60397	Shield cap body Underwater	1
	20-1021	52613	Electrode Air/O ₂ 300A	5	7	20-1003	51990	End cap 50A	1
	20-1023	52616	Electrode N ₂ 50-300A	5		20-1004	51991	End cap 100-225A	1
4	20-1215	60052	Gas Distributor	2		20-1005	51992	End cap 300A	1
5	20-1030	51350	Tip 50A	5	8	20-1007	80023	End cap Non-Conductive	1
	20-1031	51351	Tip 100A	5	9	20-1008	51994	Shield cap retainer	1
	20-1032	51352	Tip 150A	5	10	20-1027	51997	Shield cap retainer	1
	20-1033	51353	Tip 225A	5					

THERMAL DYNAMICS®

PCH/M-120®
 Pak Master 150XL®



No.	Ref.	Code	Description	Pkg.	No.	Ref.	Code	Description	Pkg.
1	9-6410	08310/TD	180° Torch head	1	5	20-1220	51360	Tip 35A	5
2	8-0538	60341.41	O-Ring	20		20-1221	51361	Tip 70A	5
3	20-1210	52612	Electrode Air - Cutting	5		20-1222	51362	Tip 120A	5
4	20-1215	60052	Gas Distributor	2					