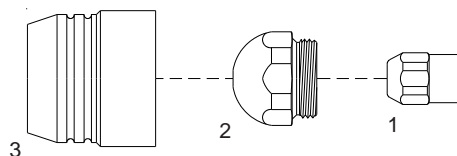
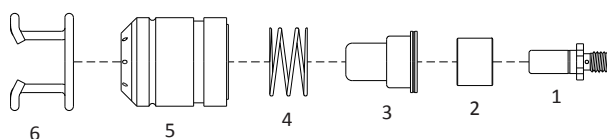


AUTOGEN RITTER® PHB 120



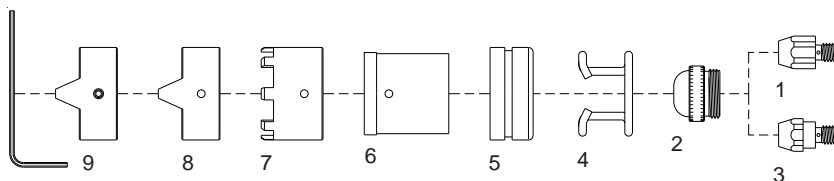
No.	Ref.	Code	Description	No.	Ref.	Code	Description
1	412-02-00	52875	Electrode	2	412-04-14	51667	Tip \varnothing 1.4
2	412-04-10	51665	Tip \varnothing 1.0		412-04-16	51668	Tip \varnothing 1.6
	412-04-12	51666	Tip \varnothing 1.2	3	413-05-00	60430	Nozzle cap w/inbuilt safety

BINZEL® PSB 31 KK®



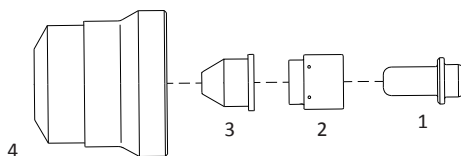
No.	Ref.	Code	Description	No.	Ref.	Code	Description
1	742.0016	52018	Electrode mm 15.5	3	742.0106	41006	Tip \varnothing 1.2
	742.0017	52016	Electrode mm 16	4	742.0084	51906	Spring
	742.0018	52017	Electrode mm 16.5	5		60408	Air diffuser, insulator
2	742.0082	60407	Insulating sleeve		742.0086	60409	Air diffuser with safety ring
3	742.0083	41005	Tip \varnothing 1.0	6	742.0089	51902	Spacer spring

BINZEL® PSB 60/80/121®



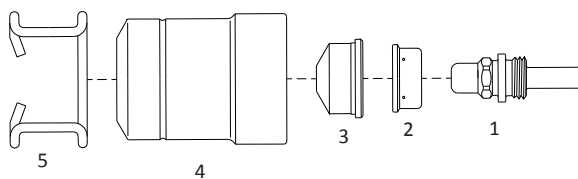
No.	Ref.	Code	Description	No.	Ref.	Code	Description
1	743.0077	52008	Electrode Zr.	3	743.0425Hf	52655	Special electrode Hf.
	743.0067	52515	Electrode Hf.	4	743.0149	51901	Spacer spring
2	743.0122	51107	Tip \varnothing 1.0	5	743.0125	60410	Distance sleeve
	743.0143	51108	Tip \varnothing 1.3	6	743.0126	60411	Distance nozzle support
	743.0132	51109	Tip \varnothing 1.5	7	743.0127	60361	Crown spacer nozzle
	743.0209	51110	Tip \varnothing 1.8	8	743.0168	60360	Double pointed nozzle
	743.0355	51135	Tip \varnothing 2.0	9	743.0267	60362	Double pointed nozzle with screw-key
3	743.0425Zr	52055	Special electrode Zr.				

BINZEL® ABIPLAS CUT 70®



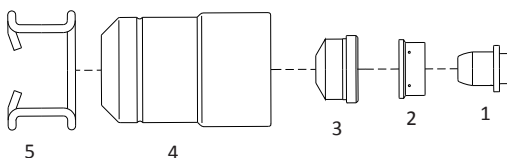
No.	Ref.	Code	Description	No.	Ref.	Code	Description
1	742.D056	52660	Electrode	3	742.D018	51545.11	Conical tip \varnothing 1.1
2	742.D073	60200	Swirl ring		742.D041	51545.12	Conical tip \varnothing 1.2
3	742.D008	51545.09	Conical tip \varnothing 0.9	4	742.D023	60470	Shield cap

BINZEL®
ABIPLAS CUT 110®



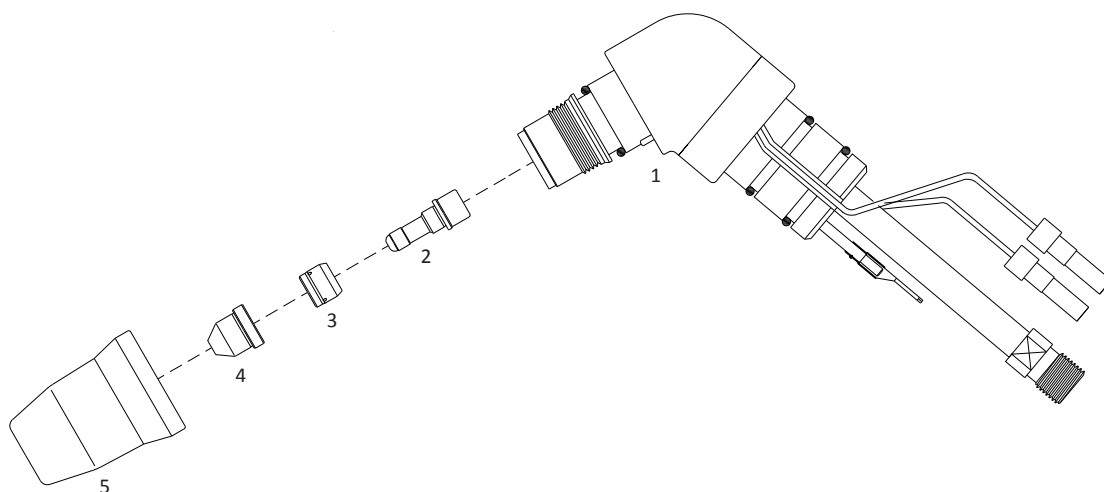
No.	Ref.	Code	Description	No.	Ref.	Code	Description
1	745.D008	52665	Electrode	3	745.D017	51540.14	Tip \varnothing 1.4
2	745.D113	60201	Swirl ring		745.D065	51540.16	Tip \varnothing 1.6
3	745.D018	51540.10	Tip \varnothing 1.0	4	745.D026	60473	Shield cap
	745.D010	51540.12	Tip \varnothing 1.2	5	745.D012	51910	Spacer spring

BINZEL®
ABIPLAS CUT 150®



No.	Ref.	Code	Description	No.	Ref.	Code	Description
1	757.D008	52670	Electrode	3	757.D010	51550.16	Tip \varnothing 1.6
2	757.D060	60202	Swirl ring		757.D011	51550.18	Tip \varnothing 1.8
3	757.D037	51550.12	Tip \varnothing 1.2	4	757.D042	60475	Shield cap
	757.D009	51550.15	Tip \varnothing 1.5	5	757.D012	51910	Spacer spring

CEBORA®
CP-40®



No.	Ref.	Code	Description	No.	Ref.	Code	Description
1	1359	01040	Hand torch head	4	1290	51086	Tip \varnothing 0.7
2	1516	52545	Electrode	5	1906	60323	Retaining cap
3	1507	60007	Swirl ring				